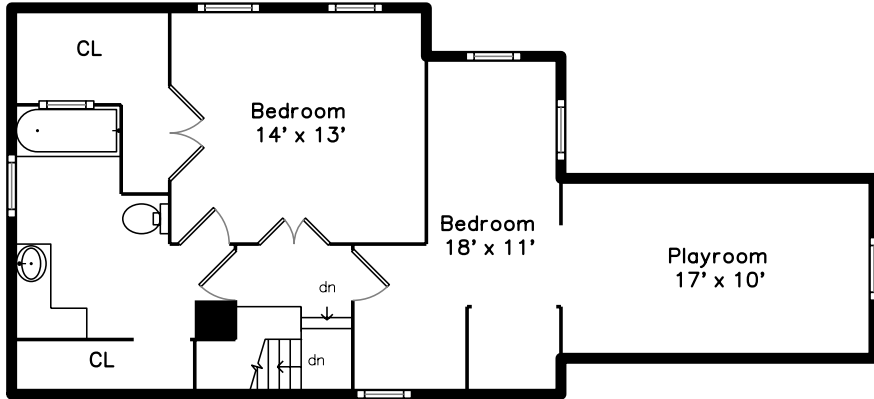
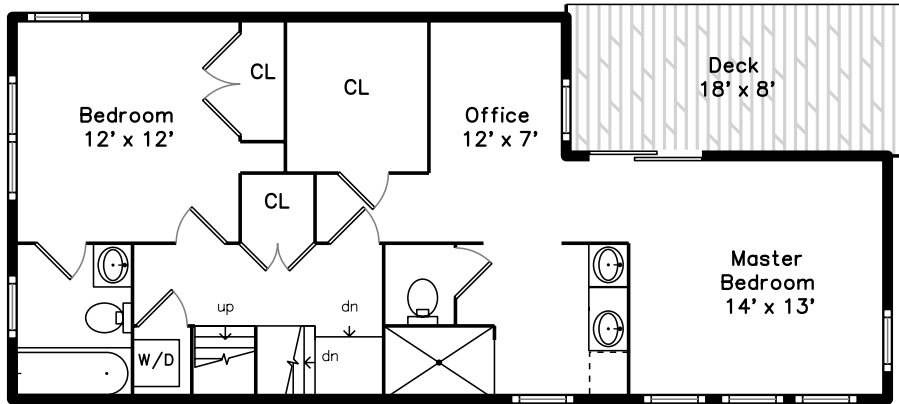


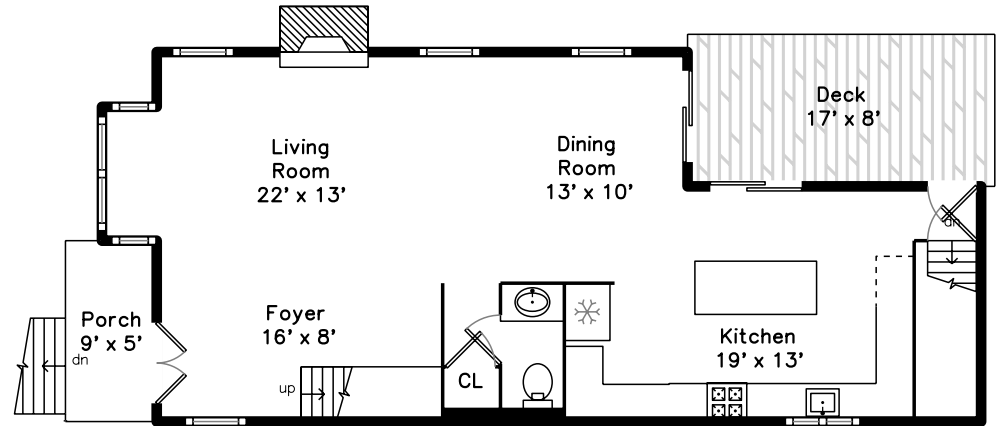
### Top



### Upper



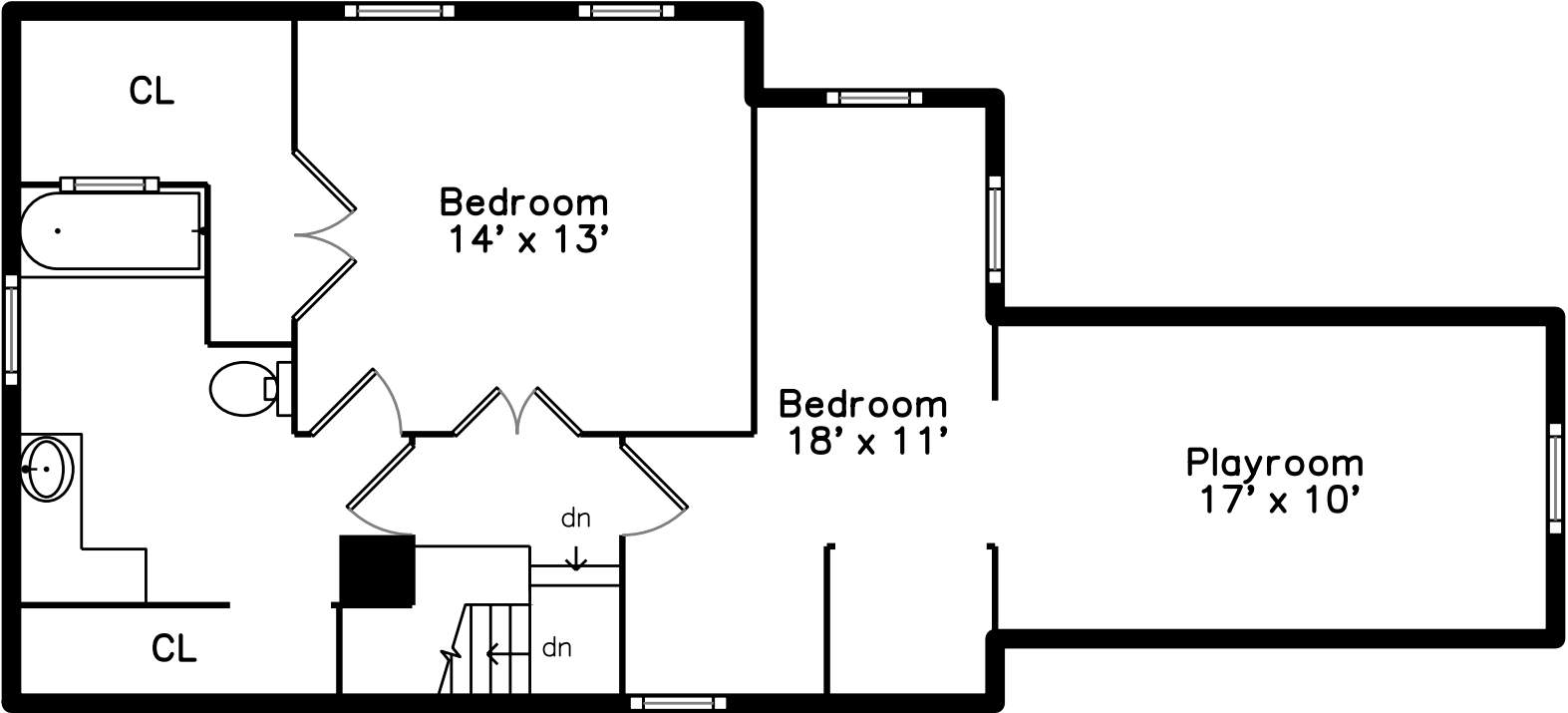
### Main



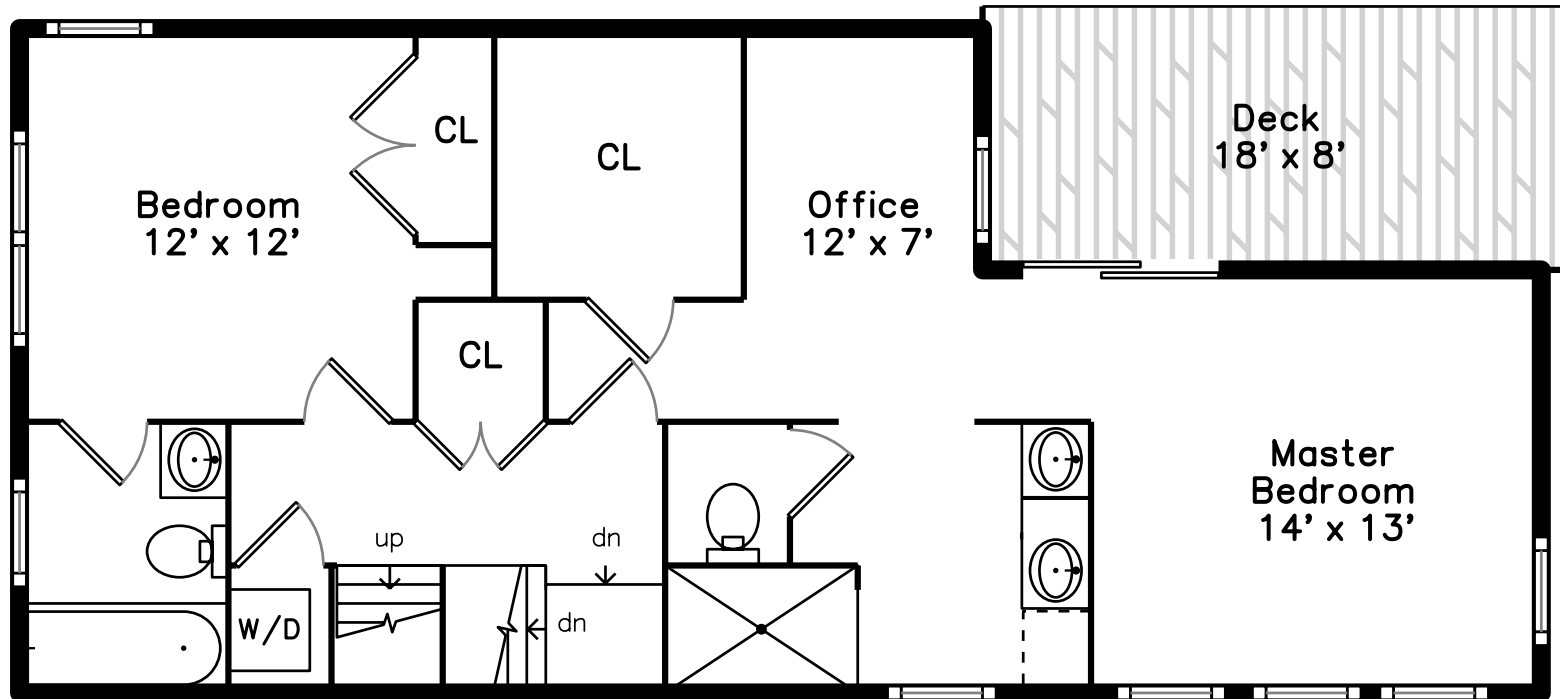
150 Hudson Street  
Somerville, MA 02144  
PicturePlan by 

Measurements may not be 100% accurate.  
Floor plans are provided for convenience only.  
Room sizes are not used to calculate area.

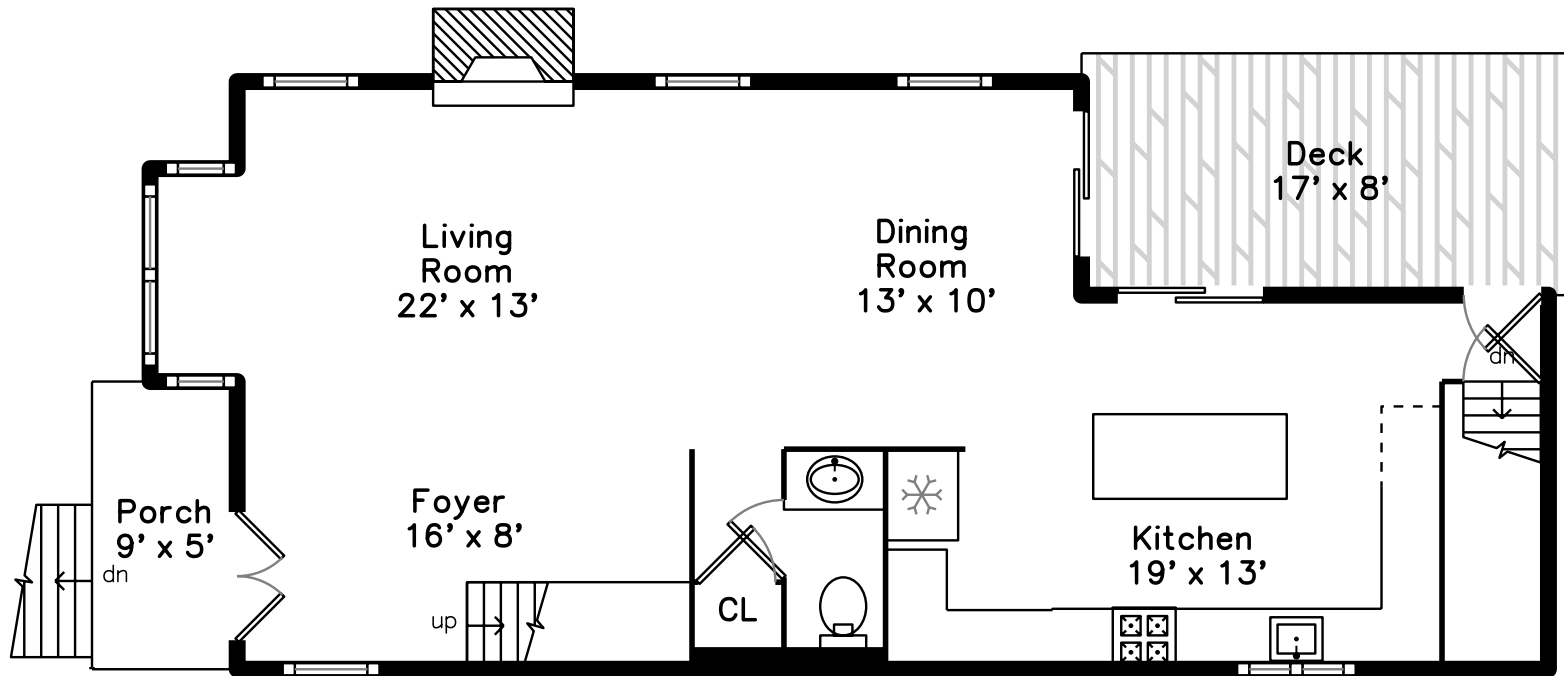
# Top



# Upper



# Main





Front



Side



Foyer



Living Room with Fireplace



Living Room



Dining Room with Deck Access



Dining Room



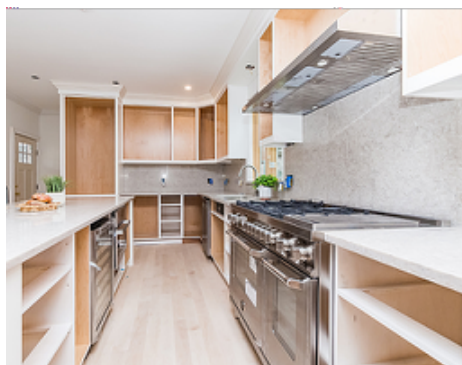
Deck level 1



Kitchen with Deck Access



Kitchen



Kitchen



Kitchen



Kitchen



Dining Room



Powder Room level 1



Living Room



Foyer



Smallest Bedroom



Attached Bathroom



Master Bedroom



Master Bedroom



Master Bedroom



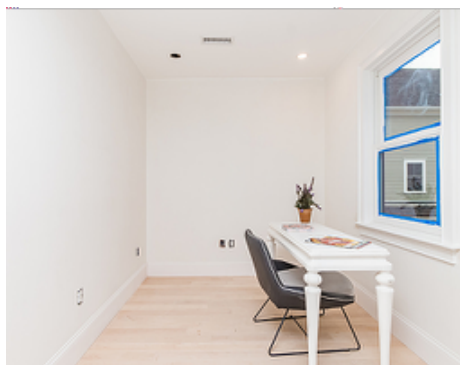
Master Bedroom



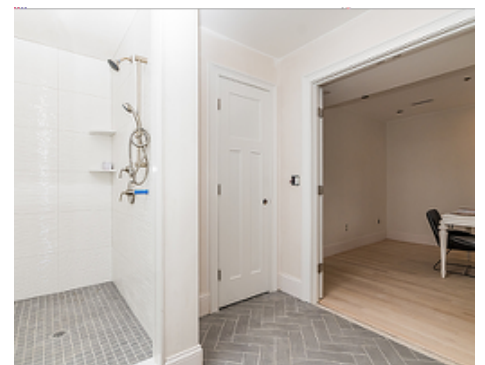
Master Bedroom Deck



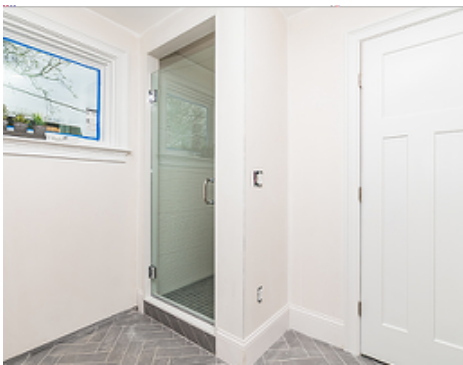
Bedroom Office or Sitting Area



Office



Master Bathroom



Master Bathroom Oversized Shower



Master Bathroom Double Sinks



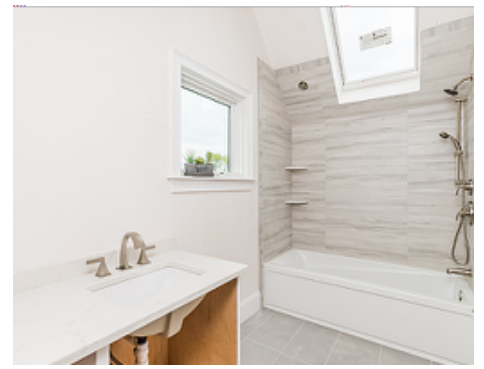
3RD Bedroom



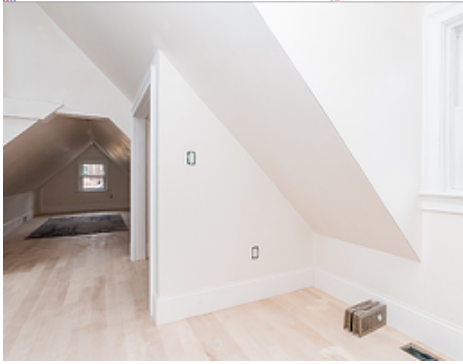
Bedroom



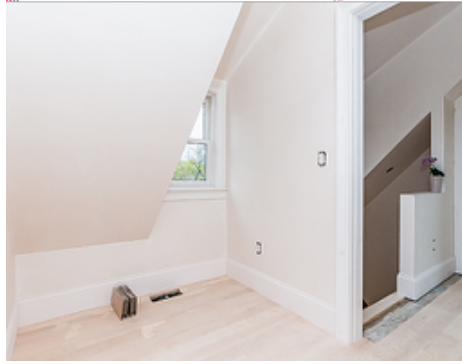
2 Door Bathroom



Bathroom



Bedroom



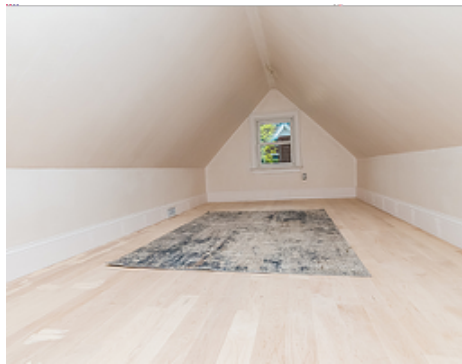
Bedroom



Bedroom



4th Bedroom



&gt;droom Playroom



ExteriorOutside