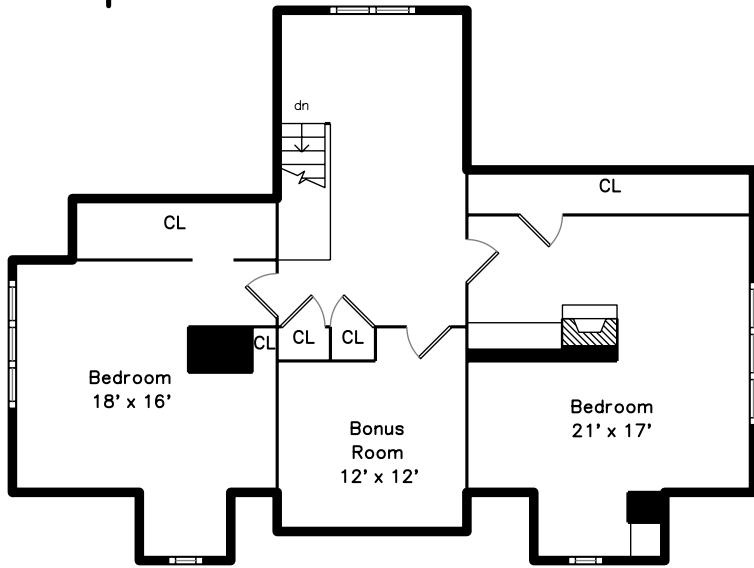
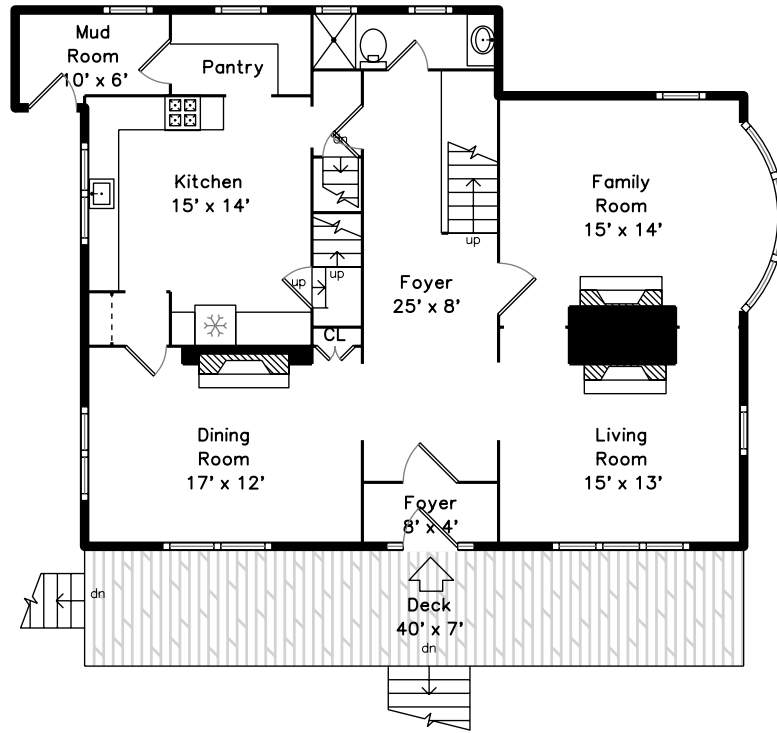


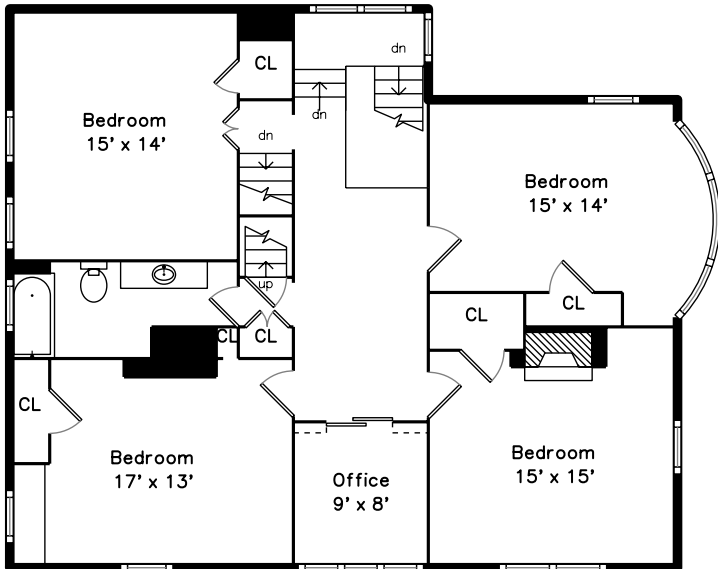
Top



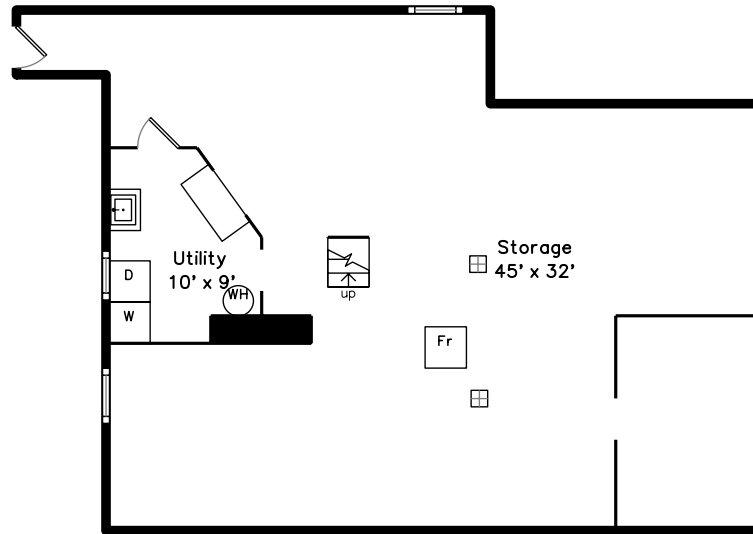
Main



Upper



Lower

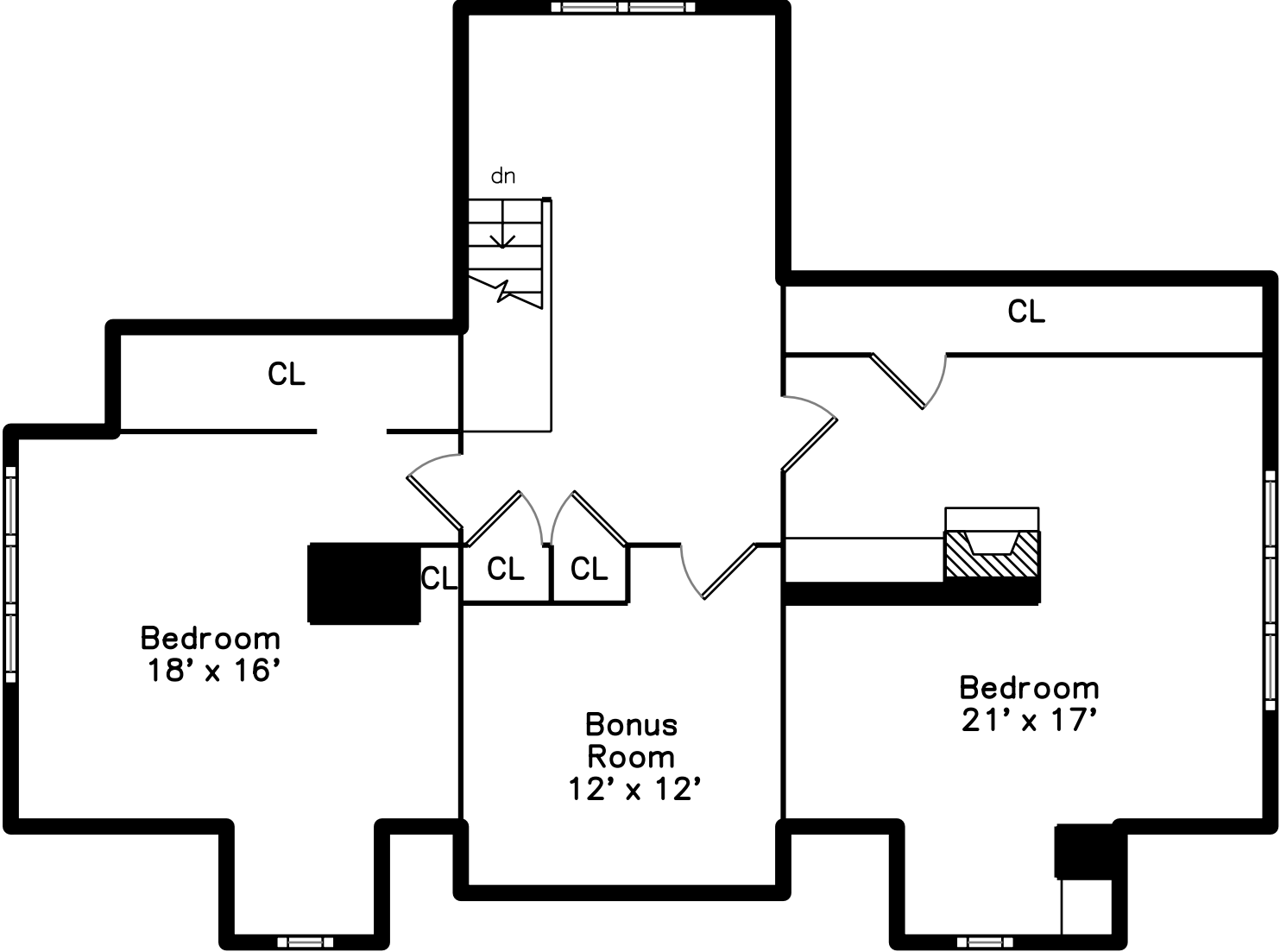


29 Percival Street  
Boston, MA 02122

PicturePlan by vis-home

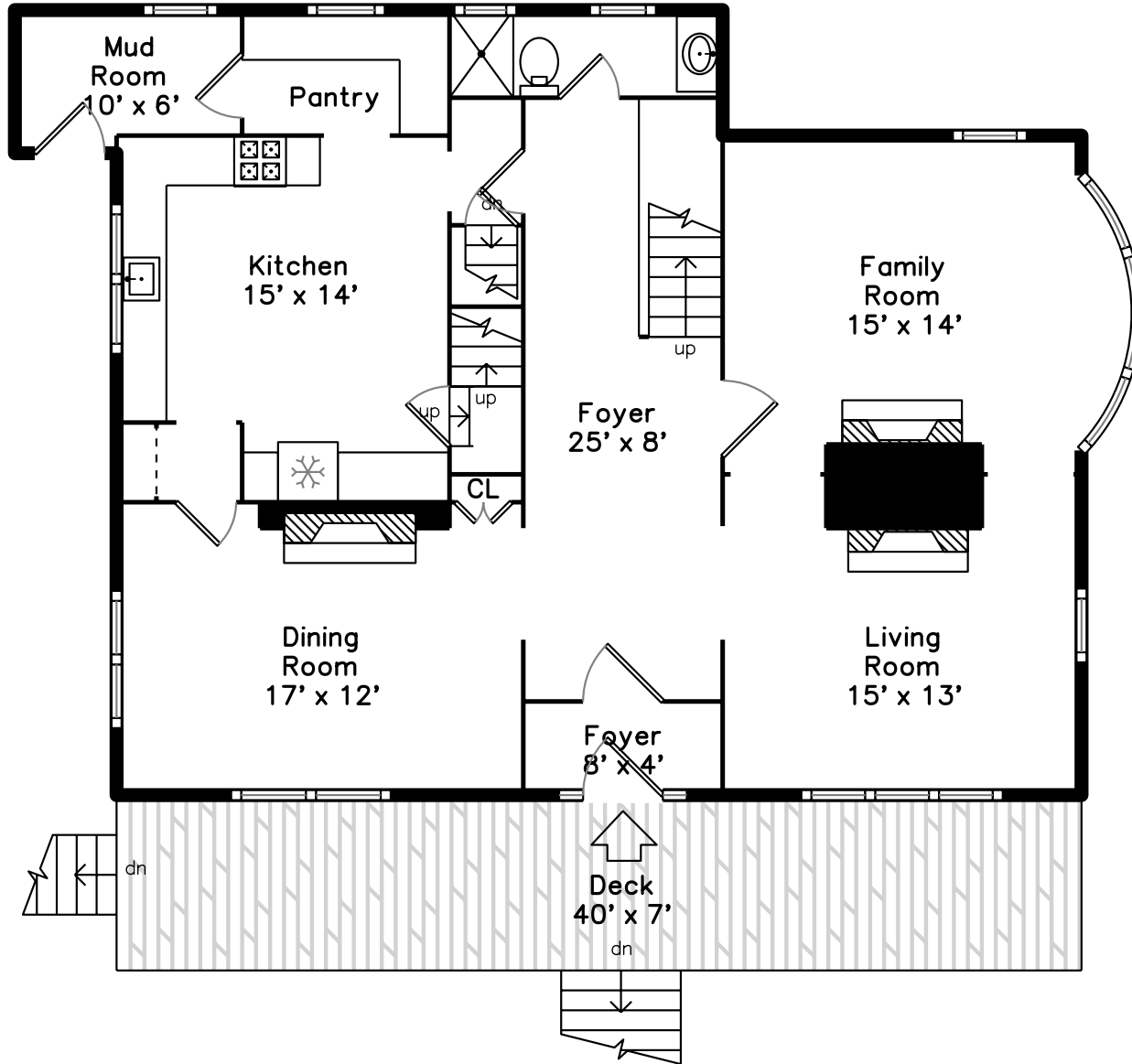
Measurements may not be 100% accurate.  
Floor plans are provided for convenience only.  
Room sizes are not used to calculate area.

# Top

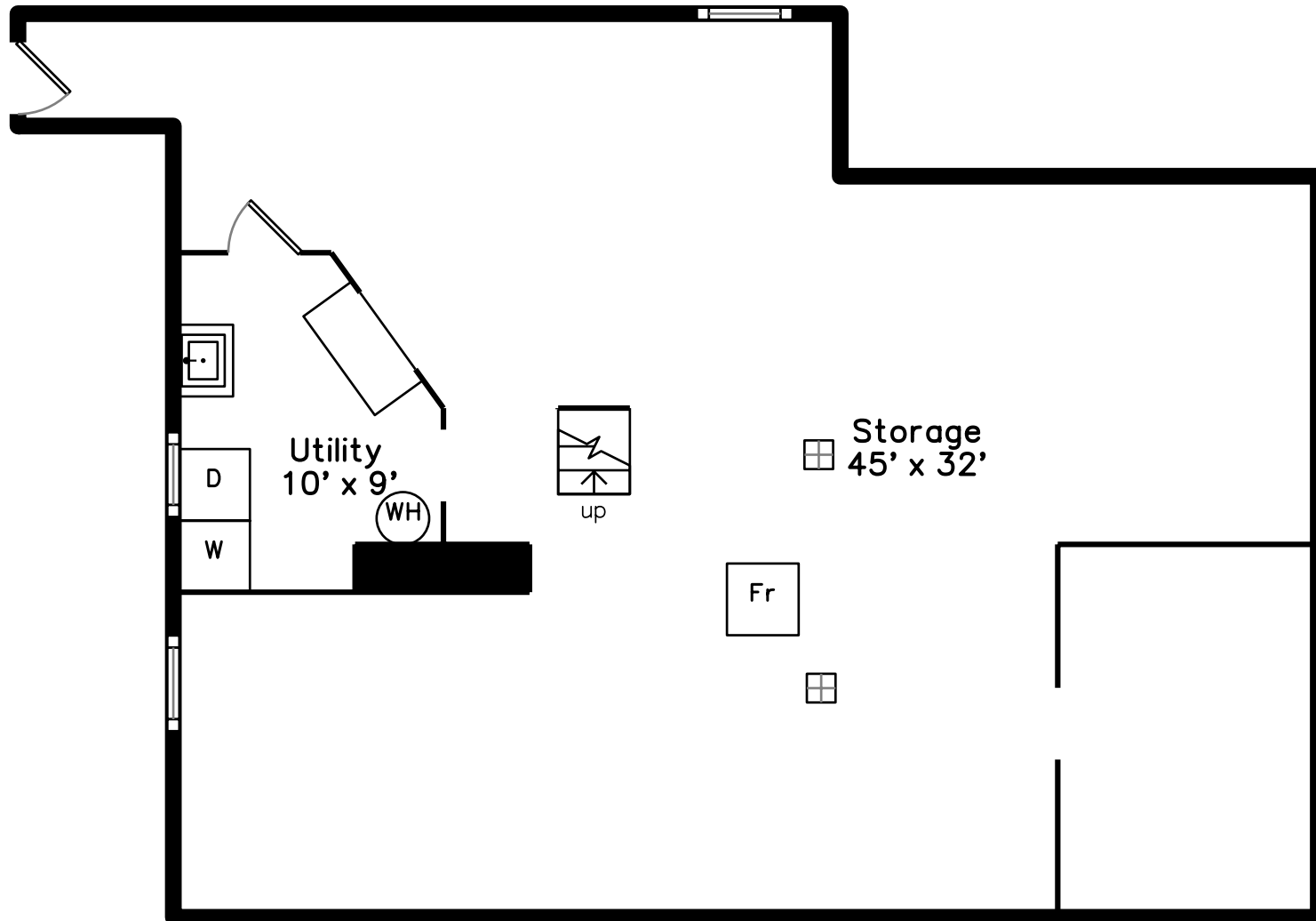




# Main



# Lower





Outside



Outside



Outside



Outside



Outside



Outside



Back



Back



Back



Back



Foyer



Foyer



Foyer



Living Room



Living Room



Living Room



Dining Room



Dining Room



Dining Room



Dining Room



Kitchen



Kitchen



Kitchen



Kitchen



Family Room



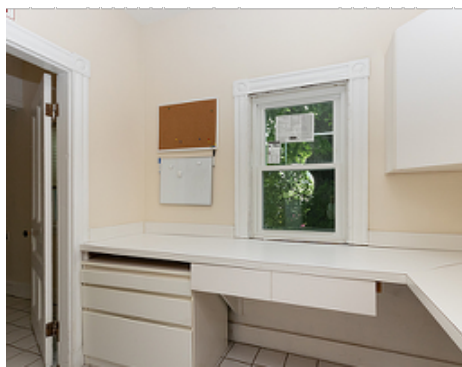
Family Room



Family Room



Family Room



Pantry



Pantry



Pantry



Pantry



Bathroom



Bathroom



Deck



Deck



Deck



Deck



Landing



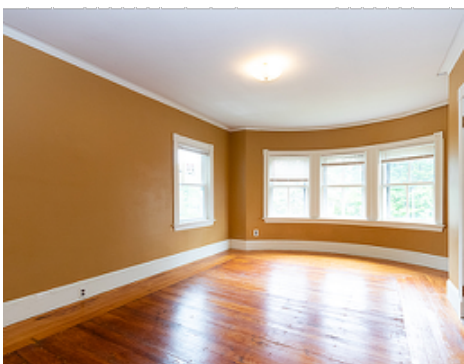
Landing



Landing



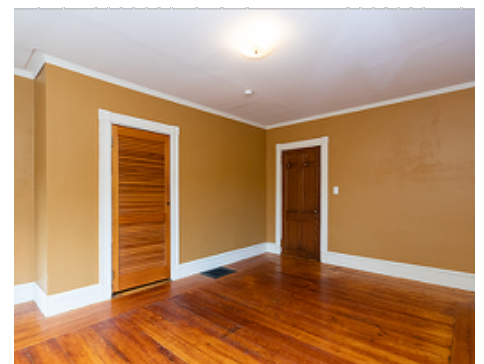
Landing



Bedroom



Bedroom



Bedroom





Bedroom



Bedroom



Bedroom



Bedroom



Bedroom



Bedroom



Bedroom



Bedroom



Bedroom



Bedroom



Bedroom



Bedroom



Bedroom



Office



Office



Office



Office



Bathroom



Landing



Landing



Landing



Landing



Bedroom



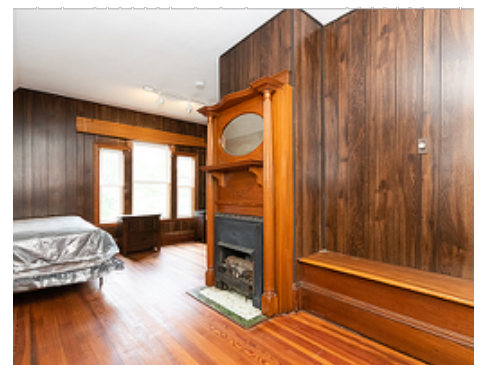
Bedroom



Bedroom



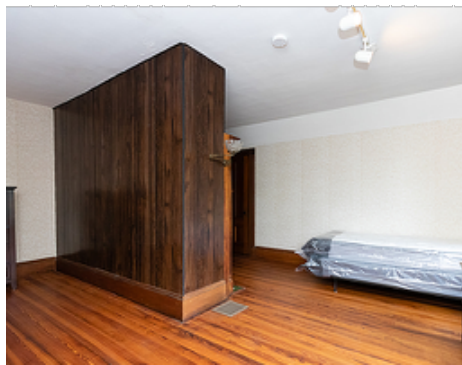
Bedroom



Bedroom



Bedroom



Bedroom



Bedroom



Bonus Room



Bonus Room



Storage



Storage



Storage



Laundry



Utility