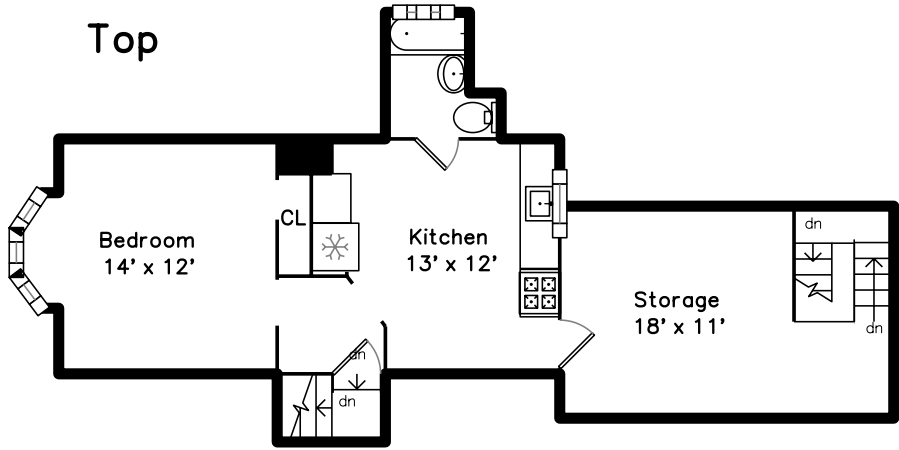
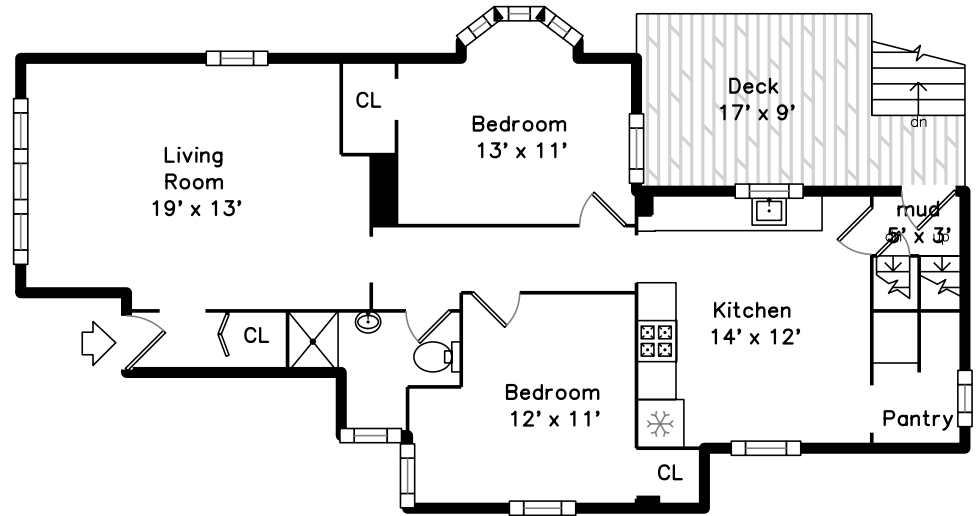


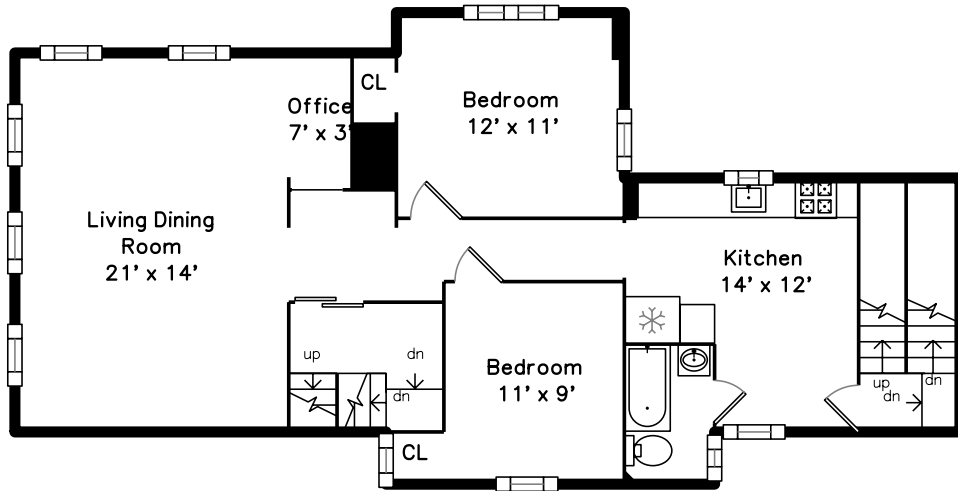
Top



Main



Upper

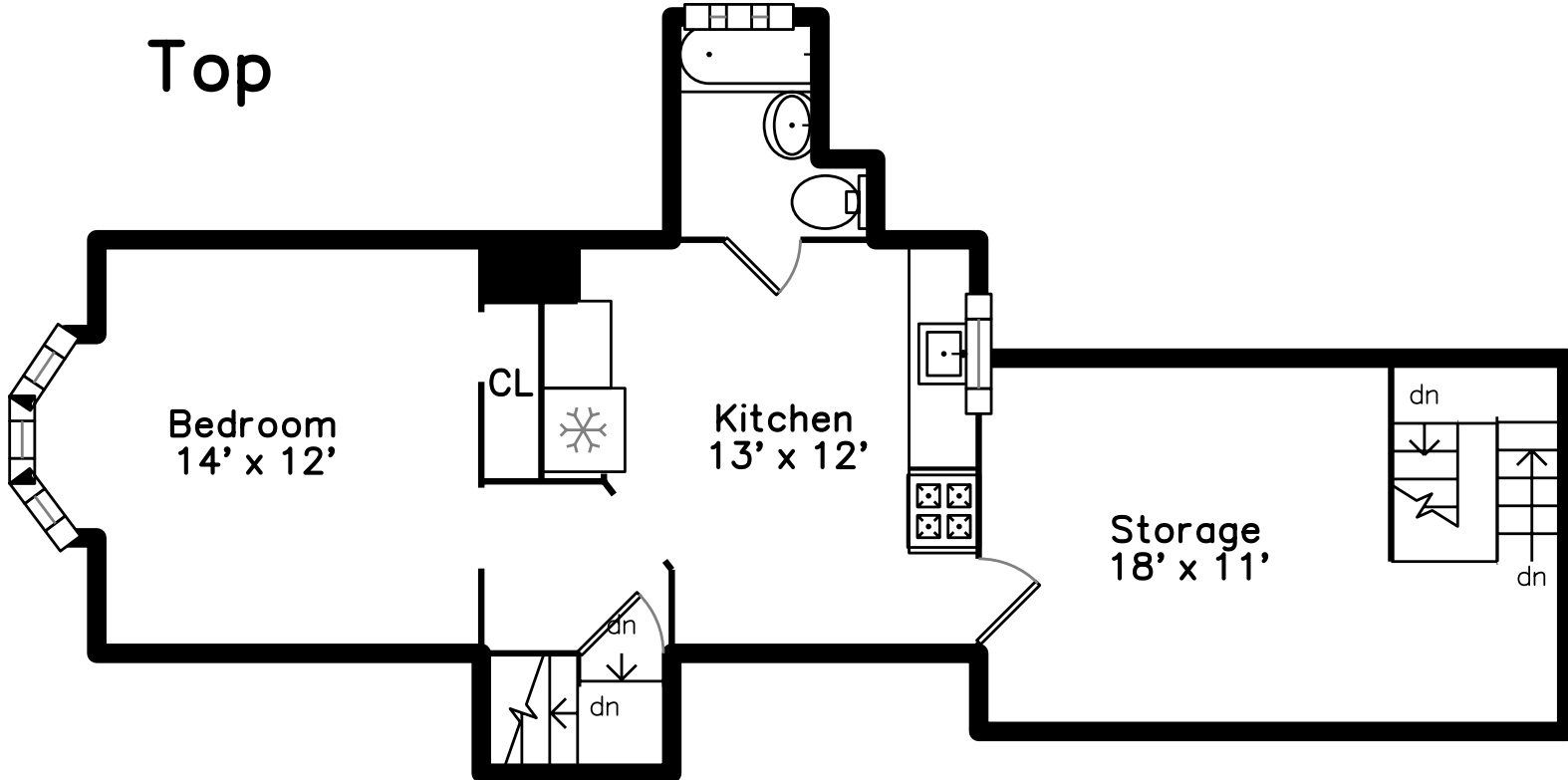


20 Prescott Street
Somerville, MA 02143

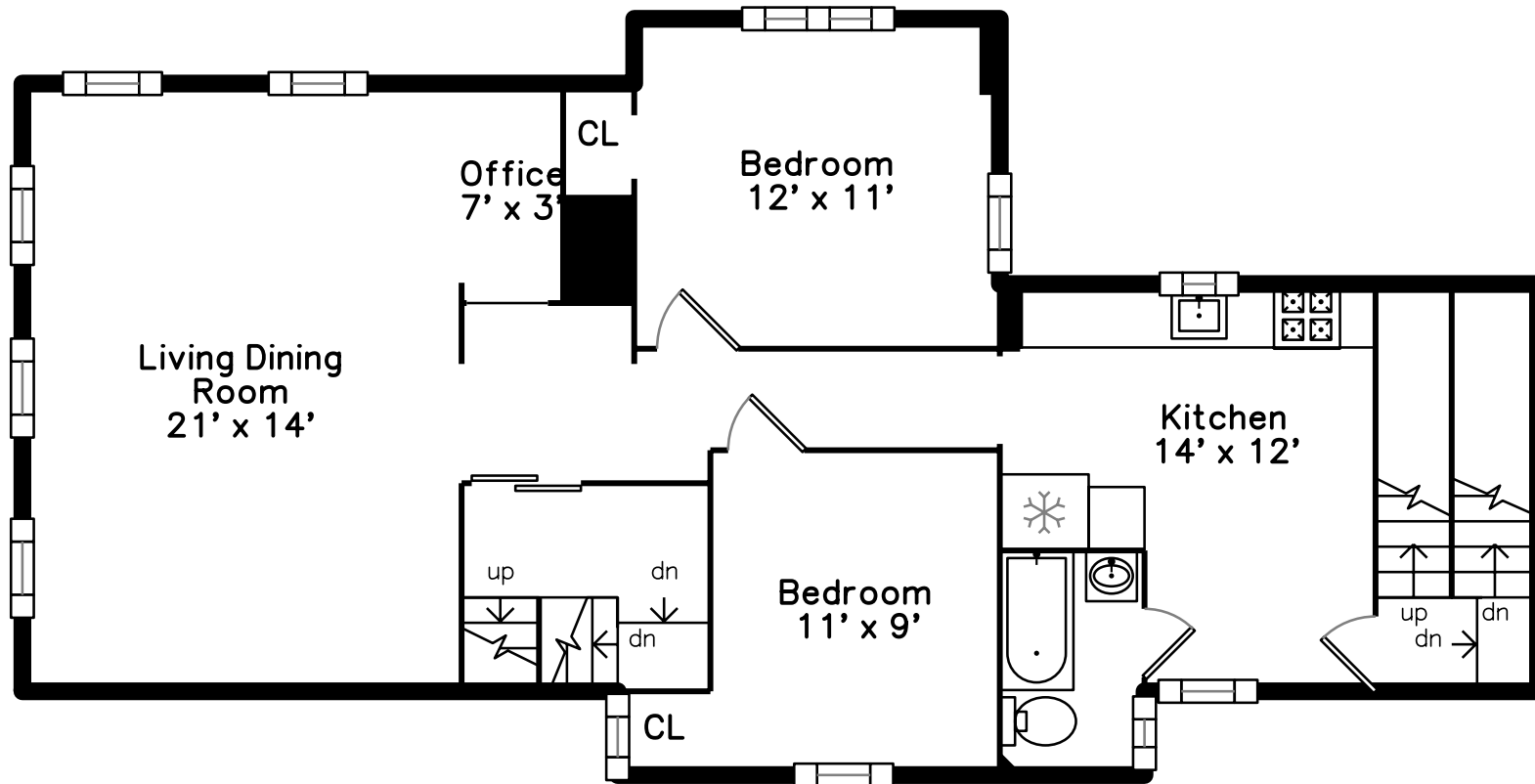
PicturePlan by vis-home

Measurements may not be 100% accurate.
Floor plans are provided for convenience only.
Room sizes are not used to calculate area.

Top



Upper





Outside



Outside



Outside



Outside



Living Room



Living Room



Living Room



Living Room



Living Room



Kitchen



Kitchen



Kitchen



Kitchen



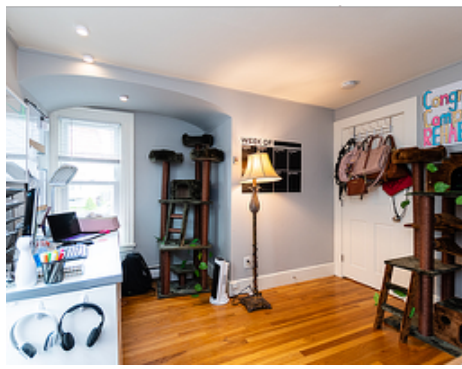
Bedroom



Bedroom



Bedroom



Bedroom



Bedroom



Bedroom



Bedroom



Bathroom



Bathroom



Pantry



Deck



Deck



Living Dining Room



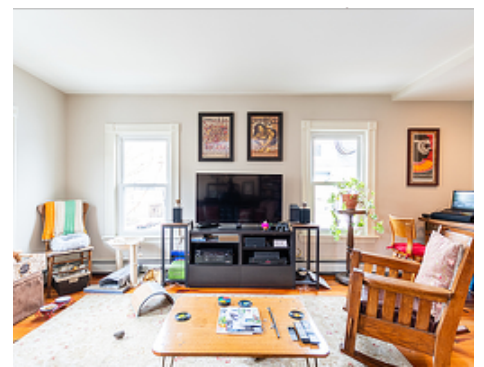
Living Dining Room



Living Dining Room



Living Dining Room



Living Dining Room



Living Dining Room



Living Dining Room



Living Dining Room



Living Dining Room



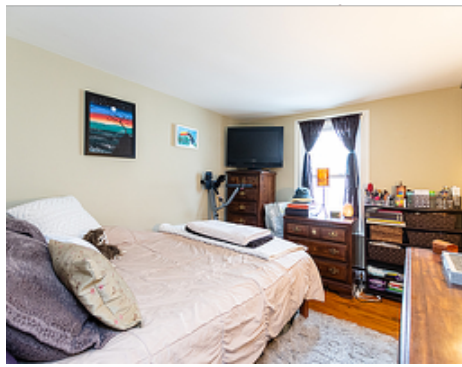
Kitchen



Kitchen



Kitchen



Bedroom



Bedroom



Bedroom



Bedroom



Bedroom



Bedroom



Office



Bathroom



Entry



Entry



Kitchen



Kitchen



Kitchen



Kitchen



Bedroom



Bedroom



Bedroom



Bedroom



Storage



Storage



Storage



Bathroom



Bathroom



Storage



Storage



Laundry



Laundry