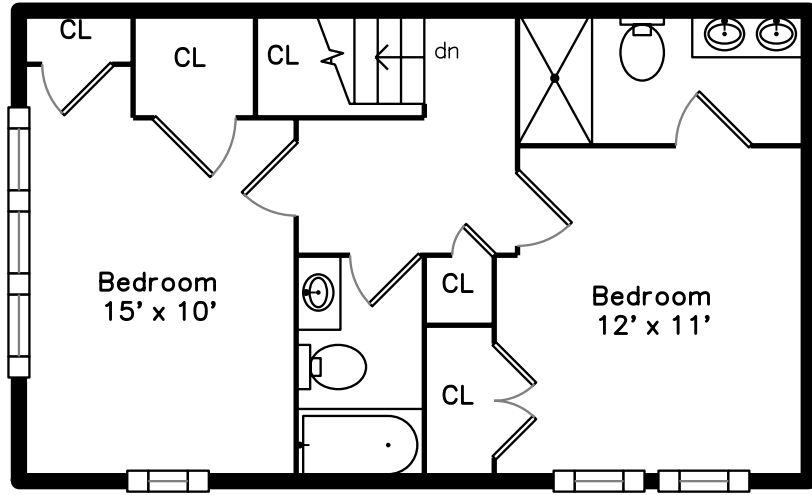
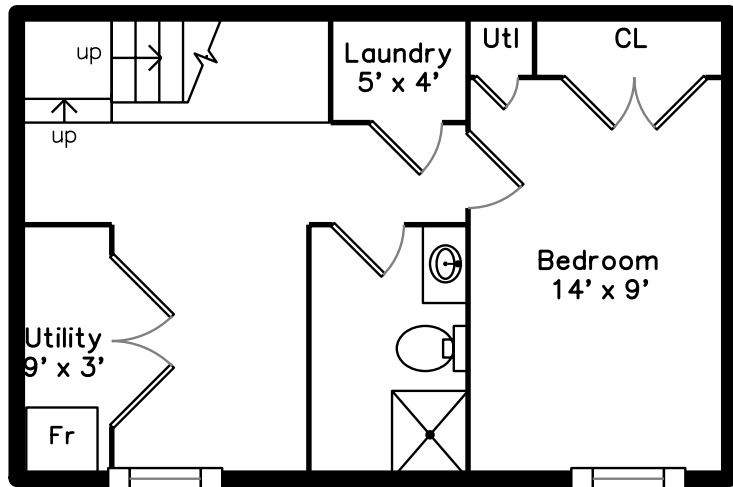


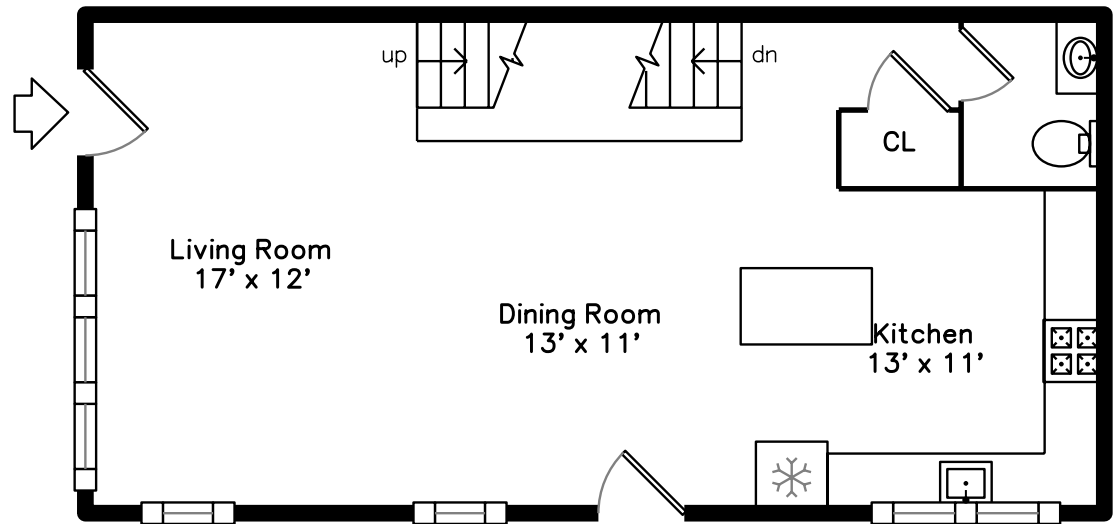
# Upper



# Lower



# Main

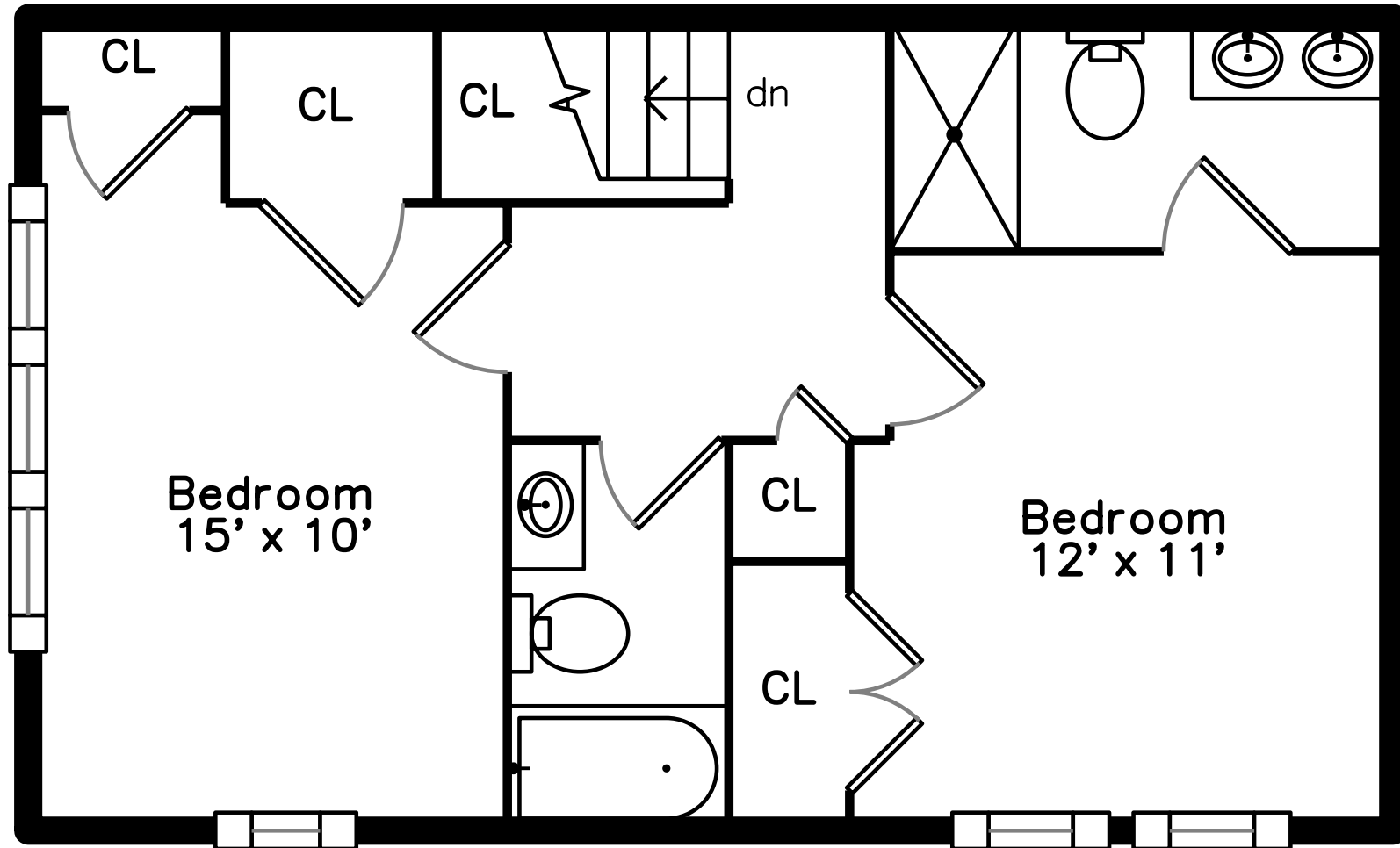


27 St Sauveur Ct  
Cambridge, MA 02138

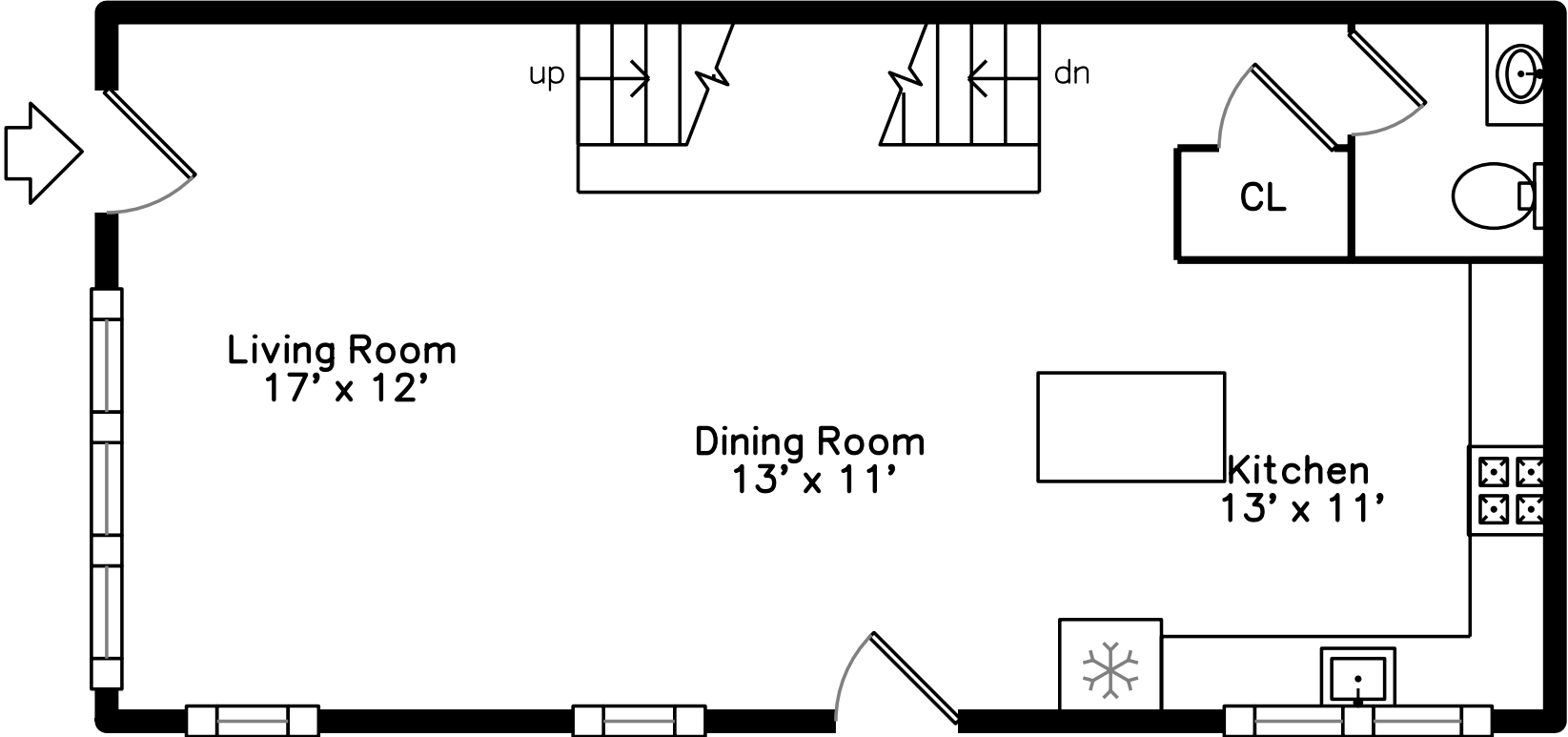
PicturePlan by  vis-home

Measurements may not be 100% accurate.  
Floor plans are provided for convenience only.  
Room sizes are not used to calculate area.

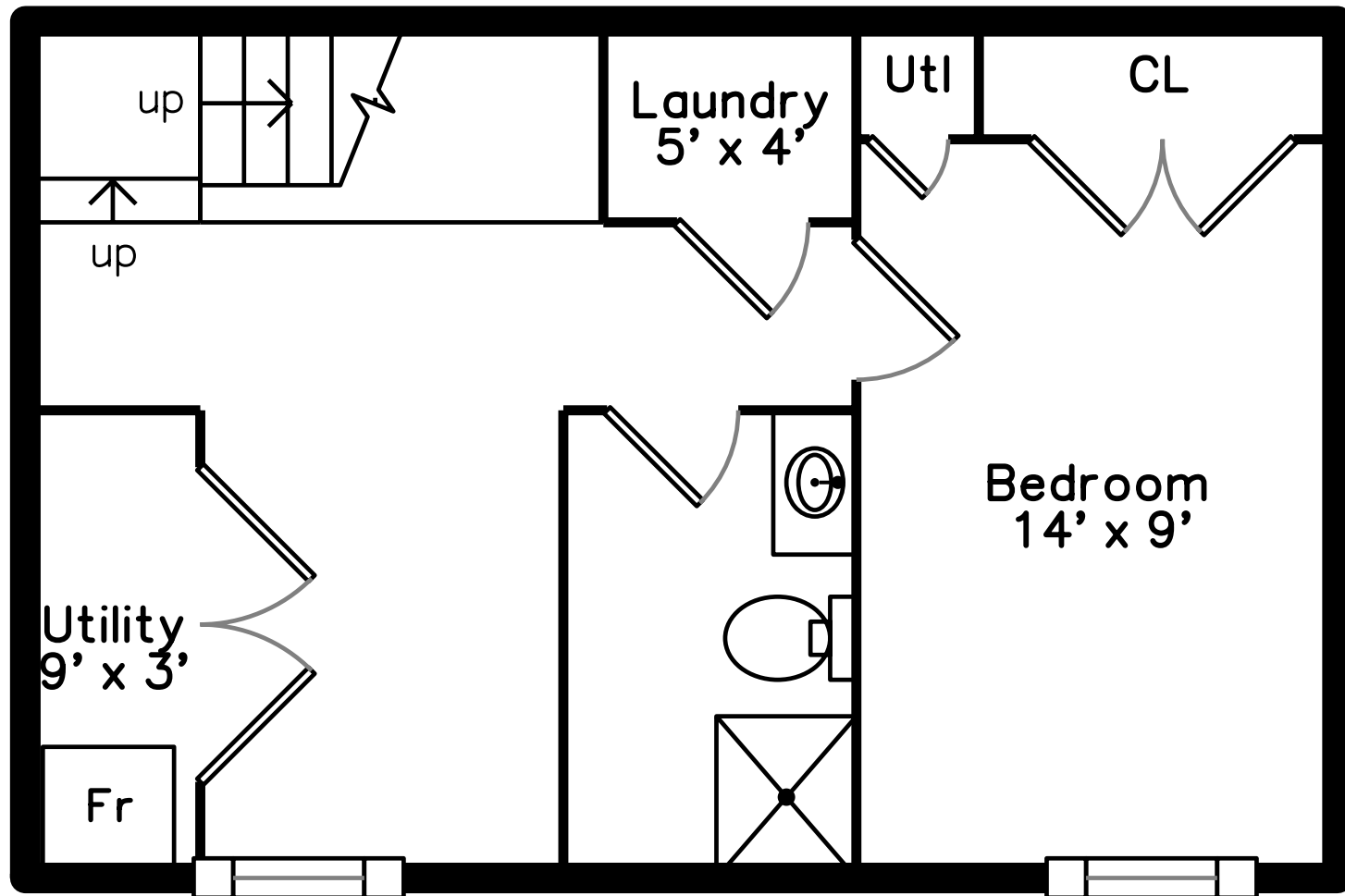
# Upper



# Main



# Lower





Outside



Outside



Outside



Back



Back



Back



Back



Living Room



Living Room



Living Room



Living Room



Living Room



Dining Room



Dining Room

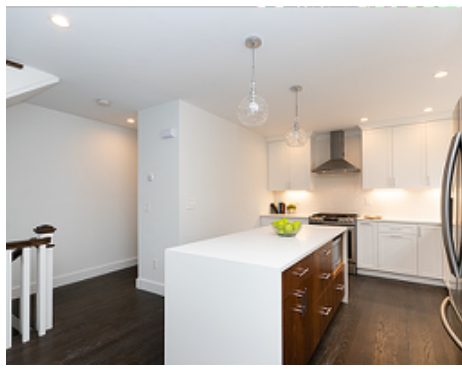


Dining Room





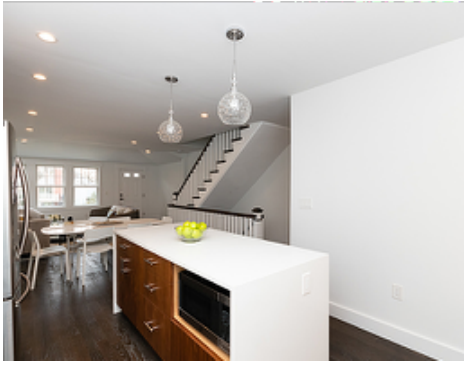
Dining Room



Kitchen



Kitchen



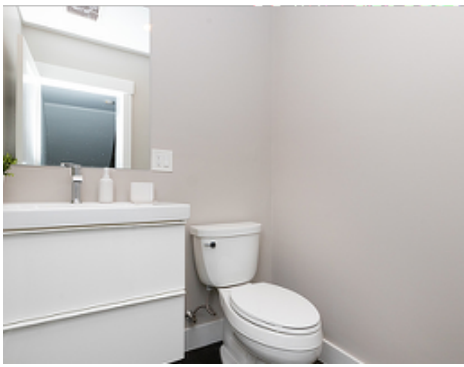
Kitchen



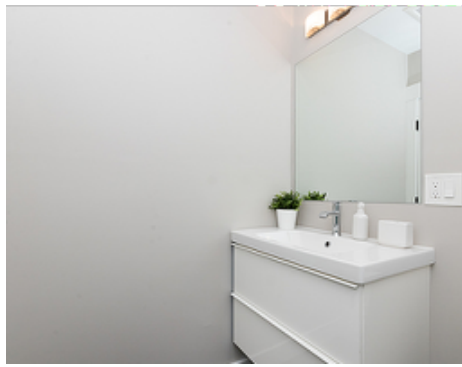
Kitchen



Kitchen



Bathroom



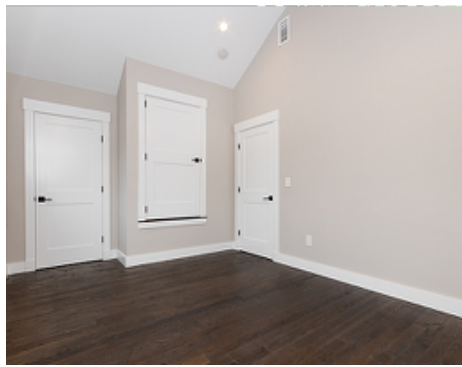
Bathroom



Bedroom



Bedroom



Bedroom



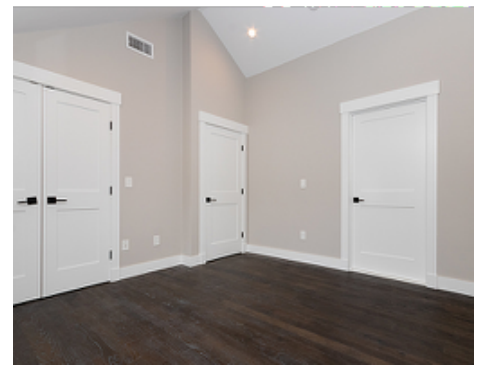
Bedroom



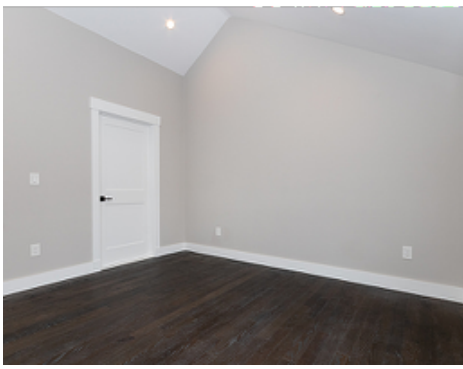
Bedroom



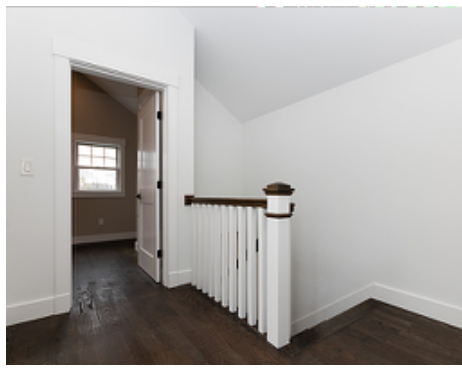
Bedroom



Bedroom



Bedroom



Hall



Bathroom



Bathroom



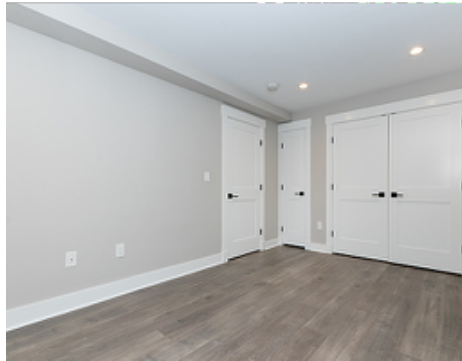
Bathroom



Bedroom



Bedroom



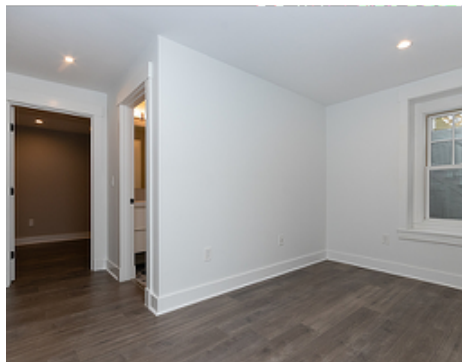
Bedroom



Bedroom



Hall



Hall



Hall



Bathroom