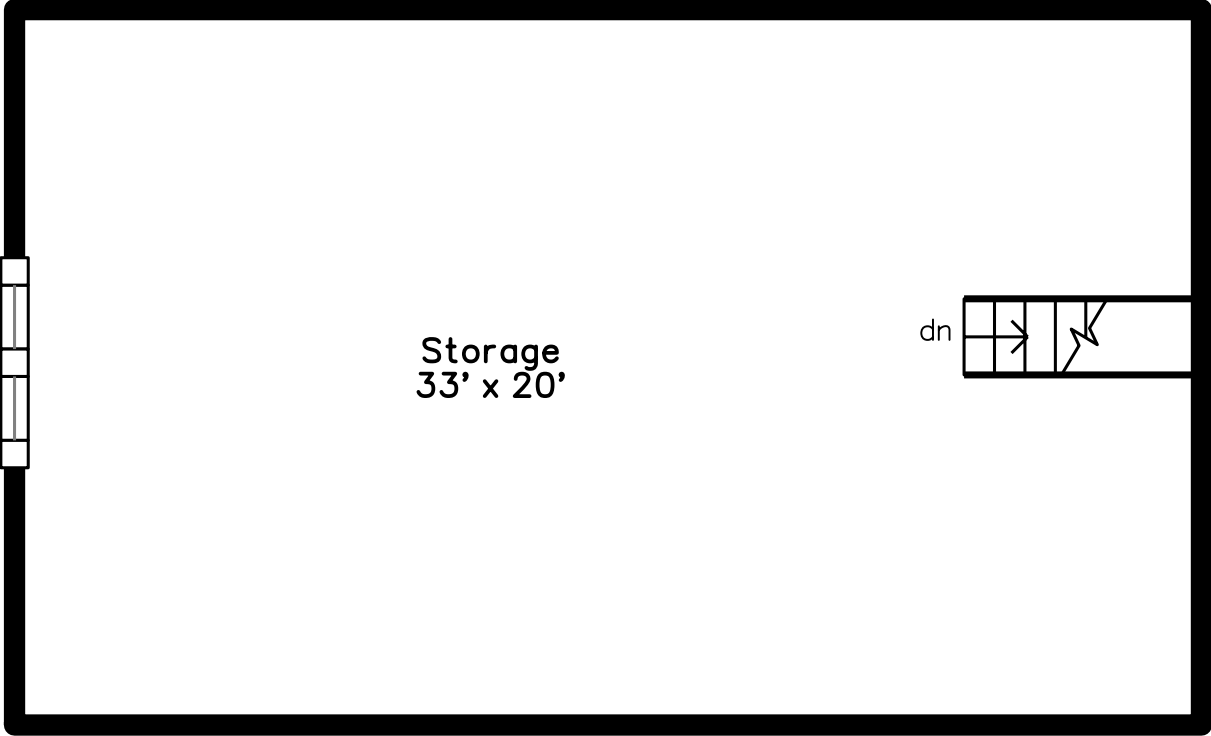


**34 Sedgwick Street
Boston, MA 02130**

PicturePlan by vis-home
 Measurements may not be 100% accurate.
 Floor plans are provided for convenience only.
 Room sizes are not used to calculate area.

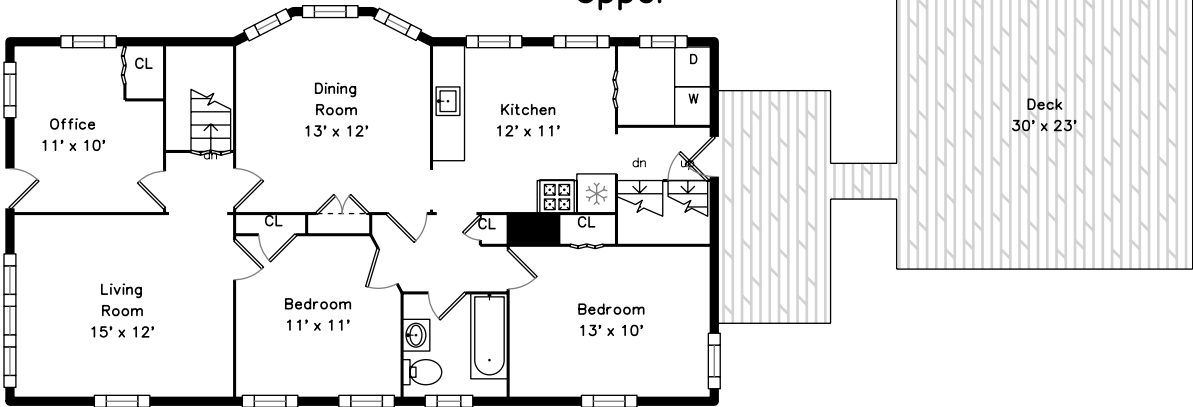
Attic



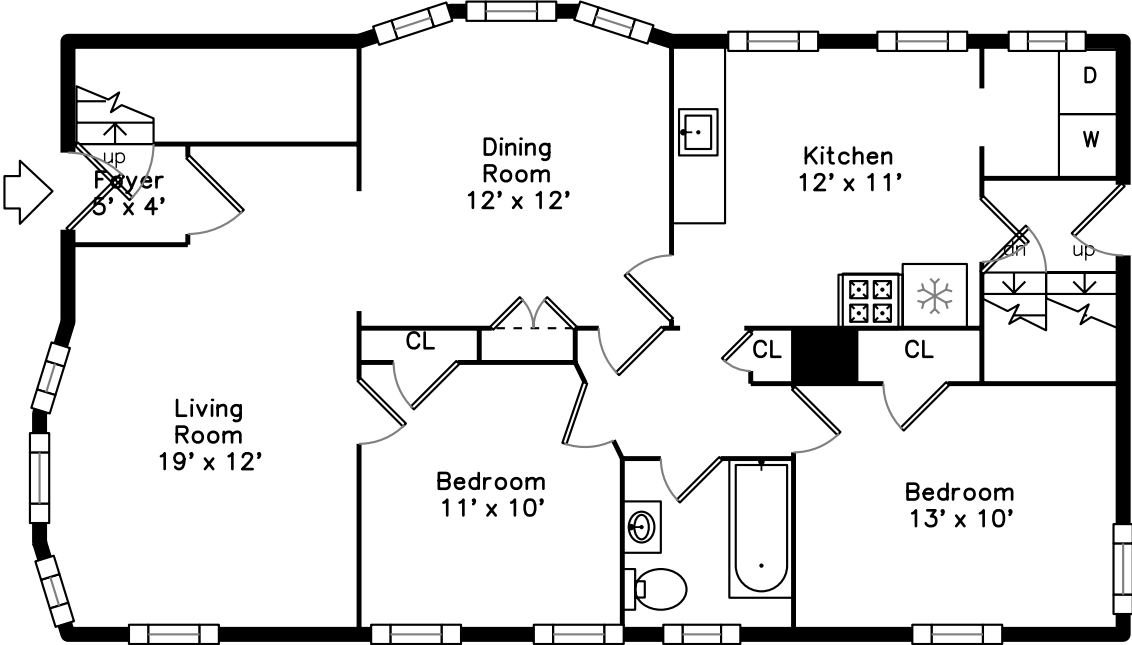
Storage
33' x 20'

dn

Upper



Main





Outside



Outside



Outside



Back Deck



Driveway



Garages



Backyard



Aerial



Aerial



Aerial



Aerial



Aerial



Aerial



Aerial



Aerial



Aerial



Aerial



Aerial



Aerial



Aerial



Aerial



Aerial



Aerial



Aerial



Aerial



Aerial



Aerial



Aerial



Curtis Hall Community Center



Living Room



Living Room



Living Room



Living Room



Dining Room



Kitchen



Kitchen



Kitchen



Kitchen



Pantry



Hall



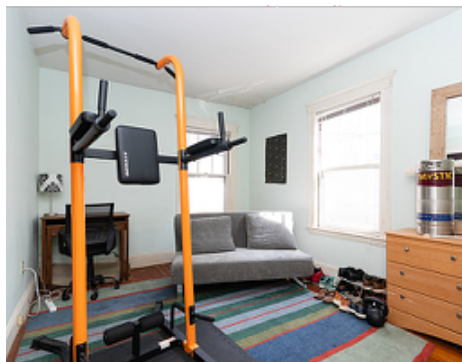
Bedroom



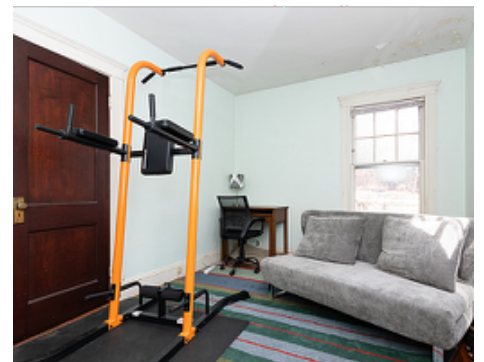
Bedroom



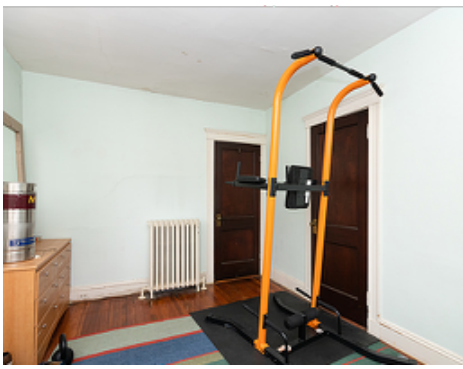
Bedroom



Bedroom



Bedroom



Bedroom



Bedroom



Bathroom



Living Room



Living Room



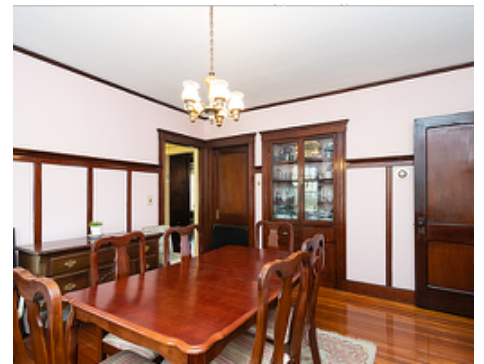
Living Room



Living Room



Dining Room



Dining Room



Dining Room



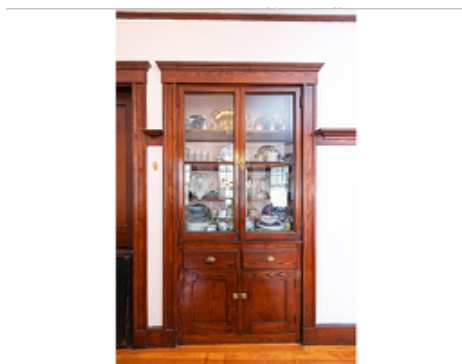
Dining Room



Dining Room



Dining Room



Dining Room



Kitchen



Kitchen



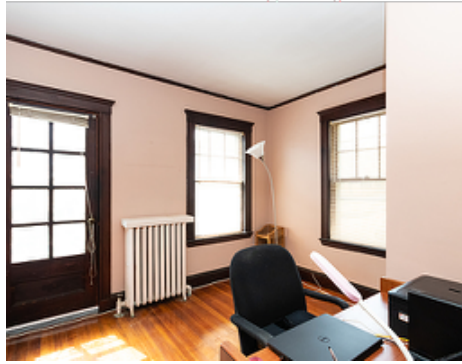
Kitchen



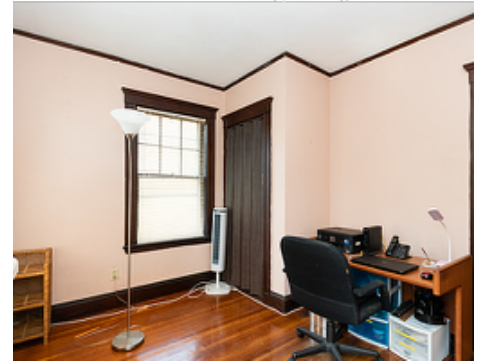
Kitchen



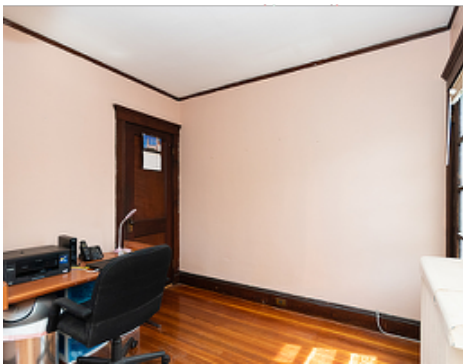
Pantry



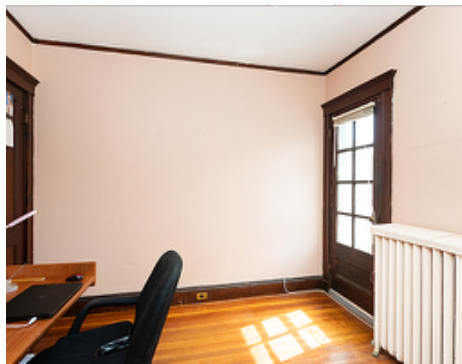
Office



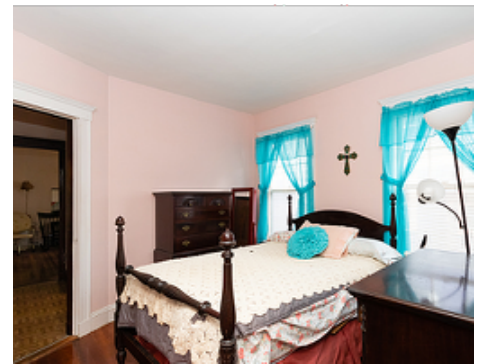
Office



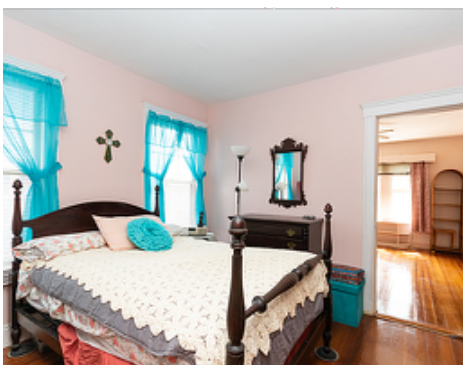
Office



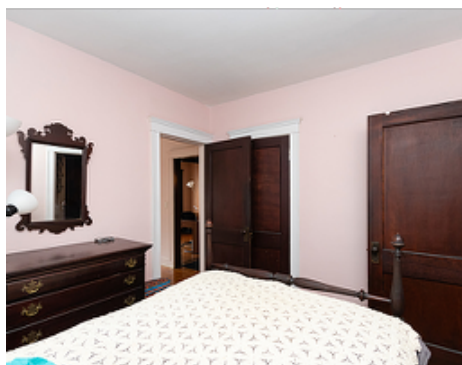
Office



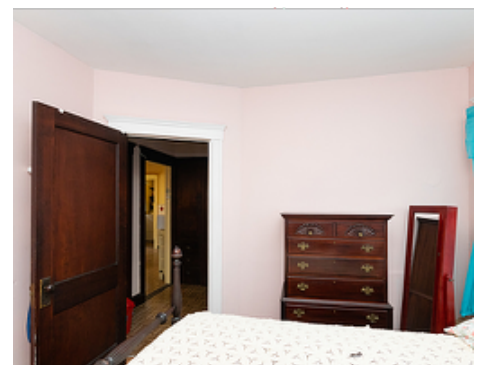
Bedroom



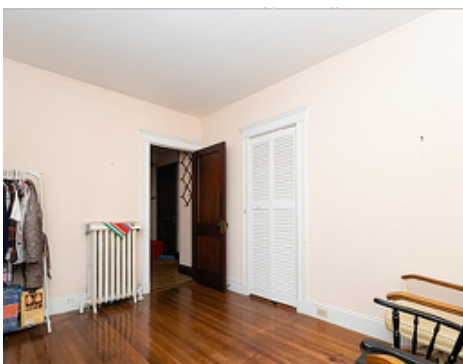
Bedroom



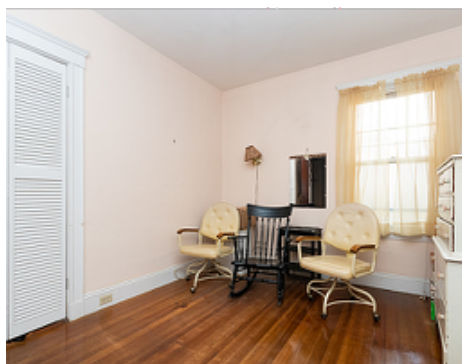
Bedroom



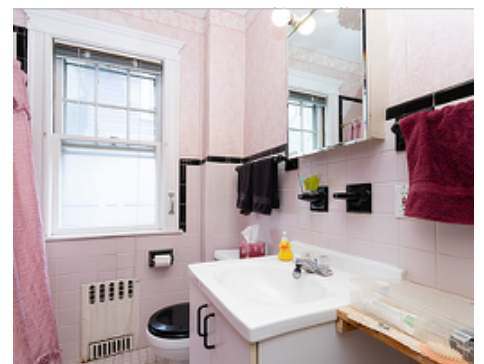
Bedroom



Bedroom



Bedroom



Bathroom



Deck



Deck



Deck



Deck



Deck