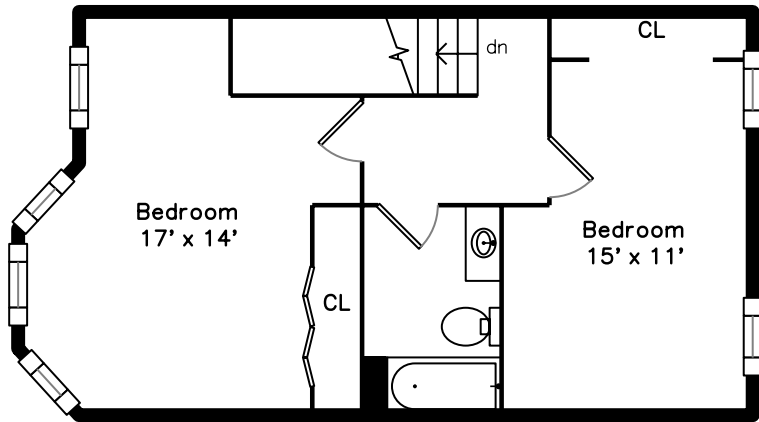
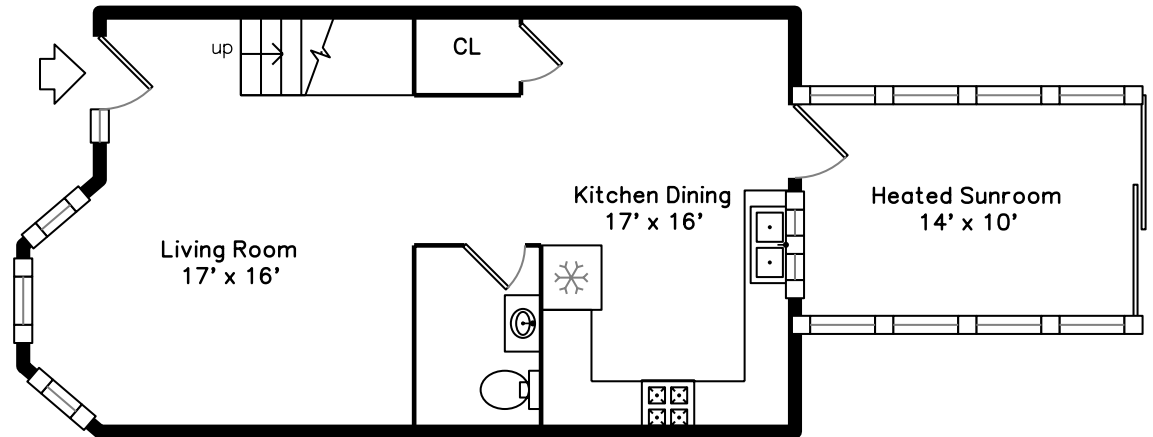


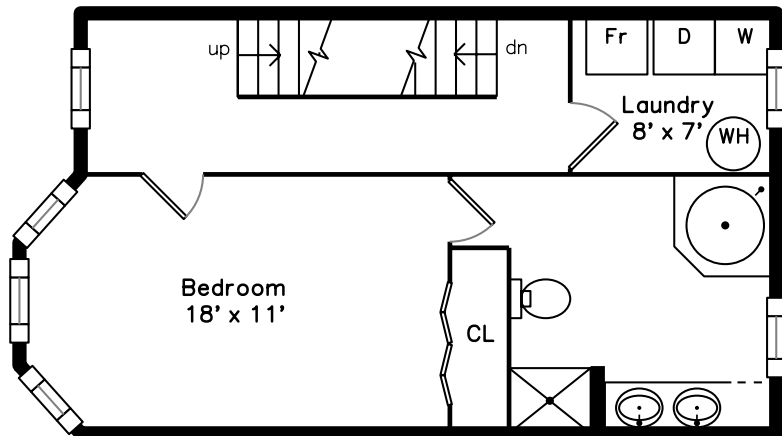
Top



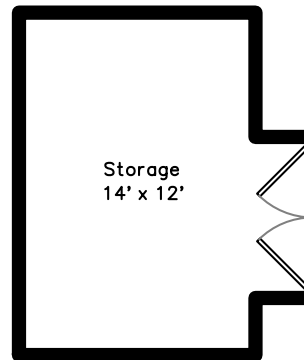
Main



Upper



Lower

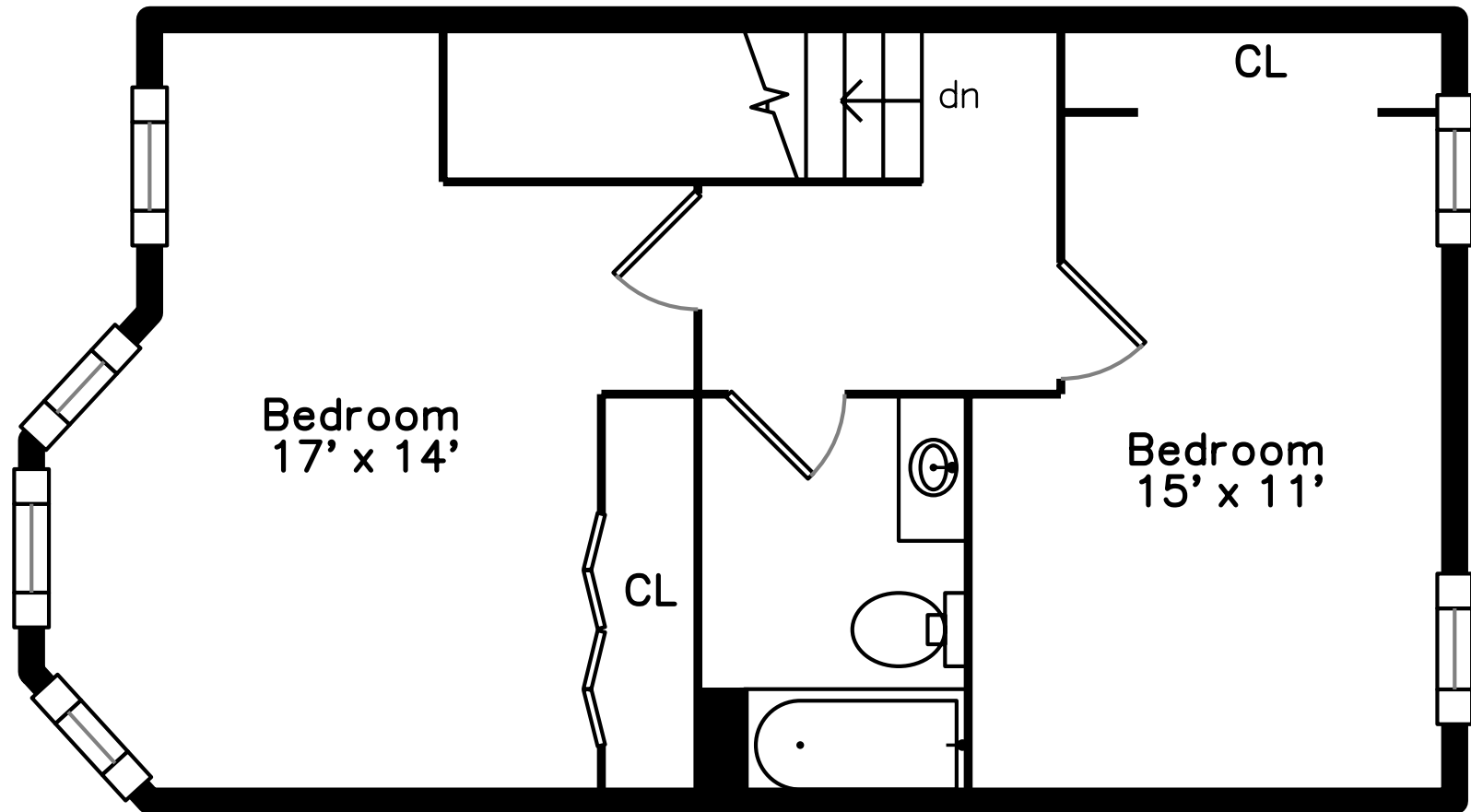


12 Roseclair Street
Boston, MA 02125

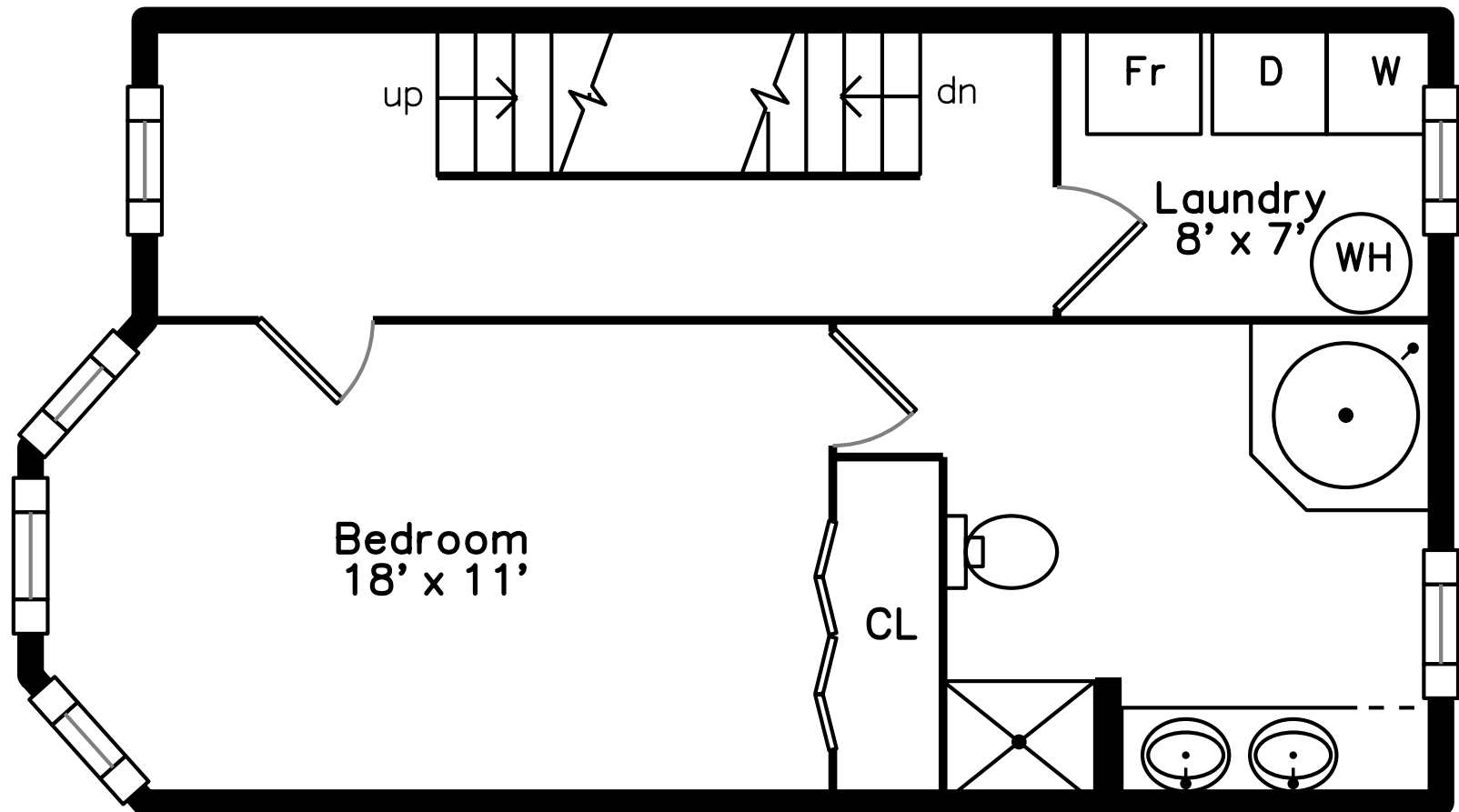
PicturePlan by  vis-home

Measurements may not be 100% accurate.
Floor plans are provided for convenience only.
Room sizes are not used to calculate area.

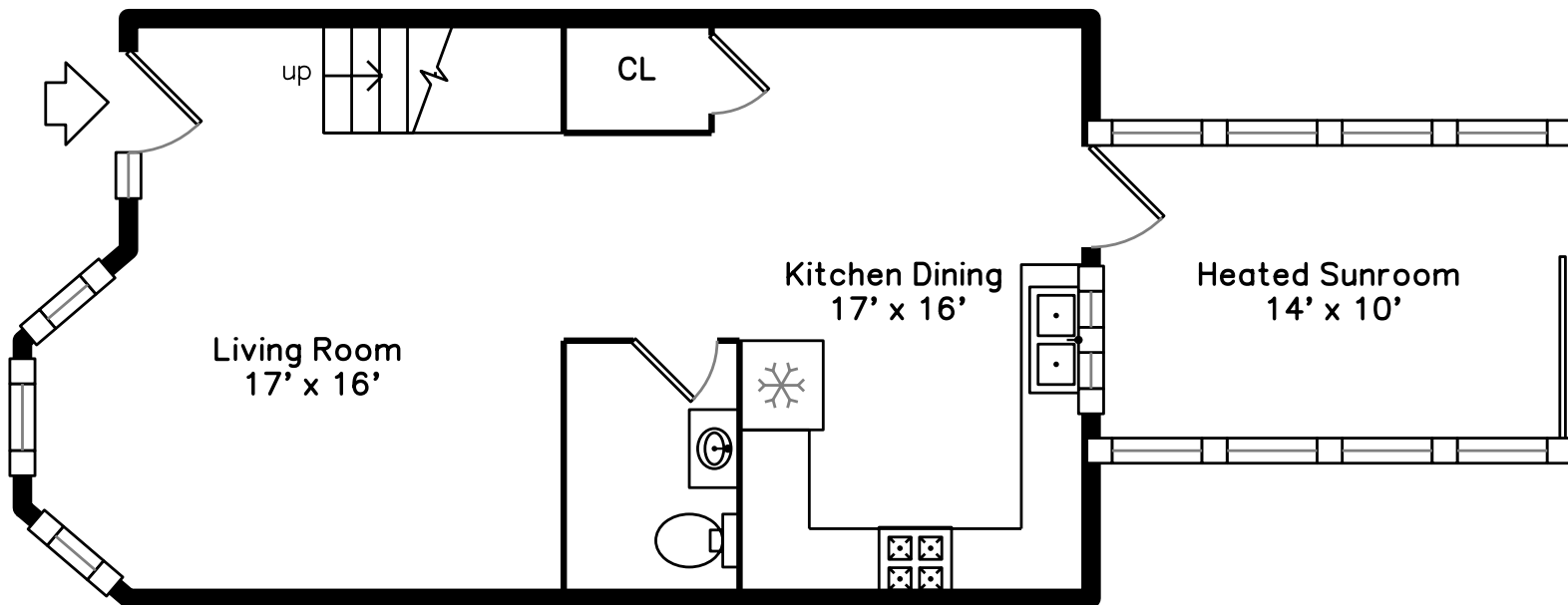
Top



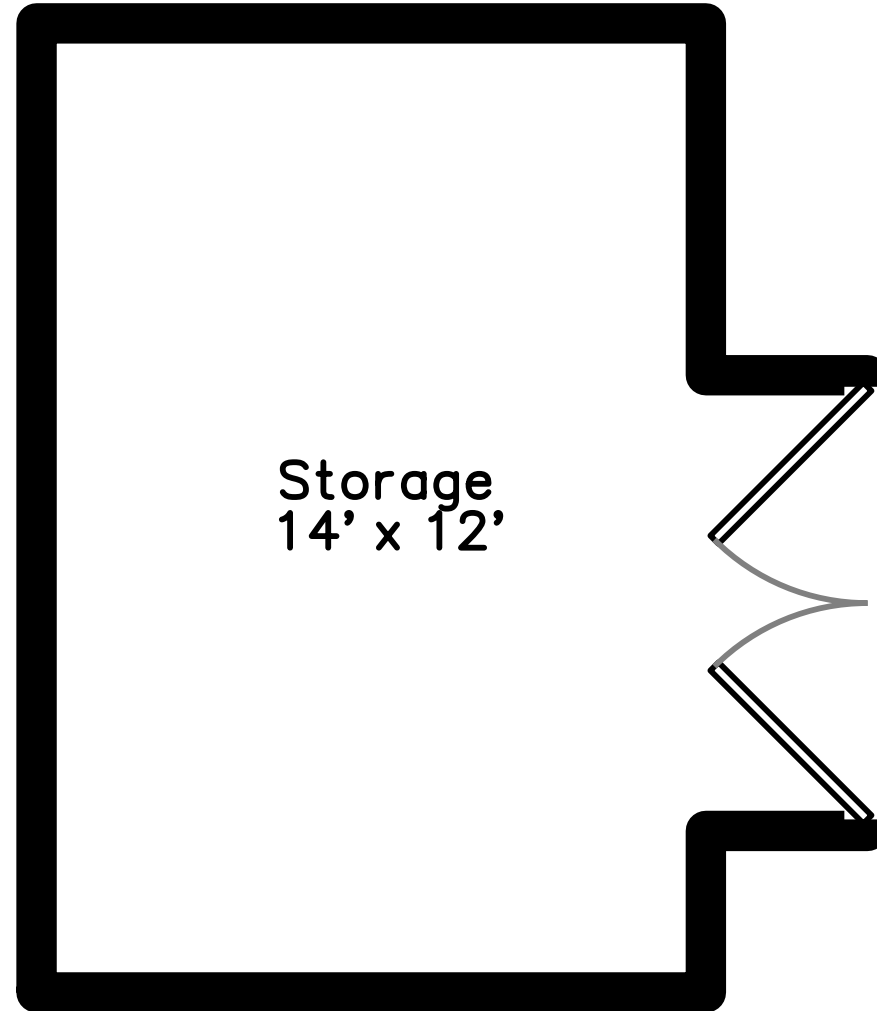
Upper



Main



Lower





Outside



Outside



Outside



Outside



Outside



Back



Back



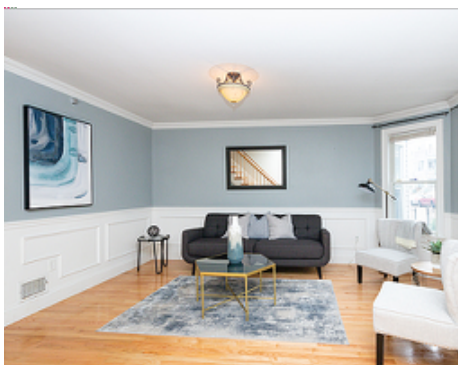
Back



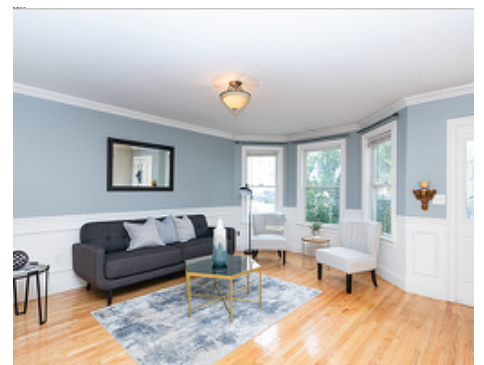
Back



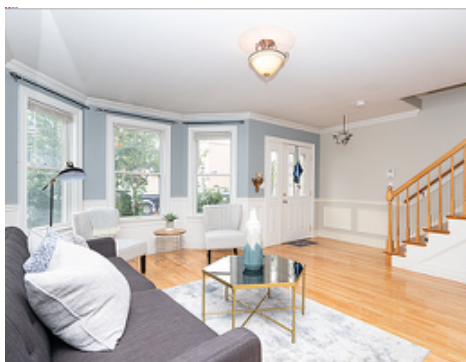
Outside



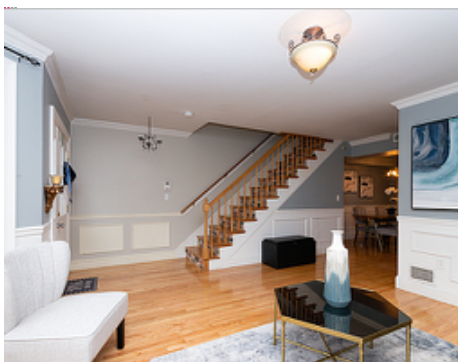
Living Room



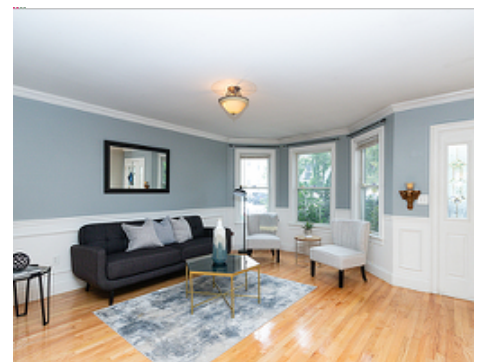
Living Room



Living Room



Living Room



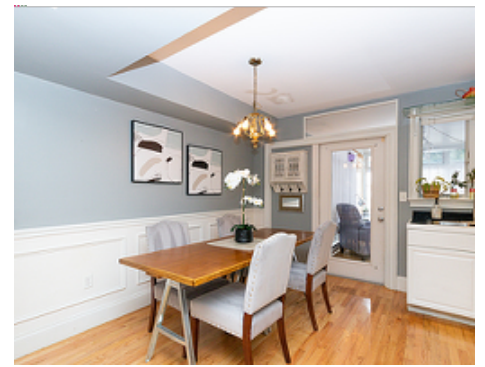
Living Room



Kitchen Dining



Kitchen Dining



Kitchen Dining



Kitchen Dining



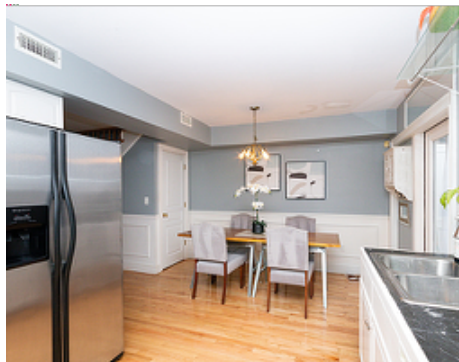
Kitchen Dining



Kitchen Dining



Kitchen Dining



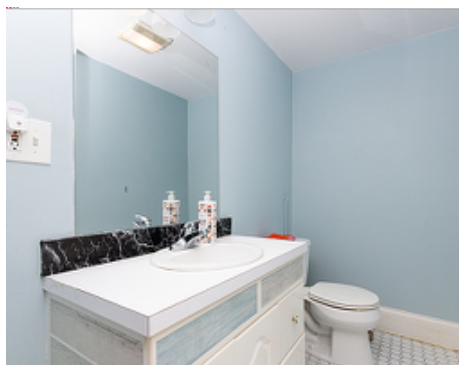
Kitchen Dining



Porch



Porch



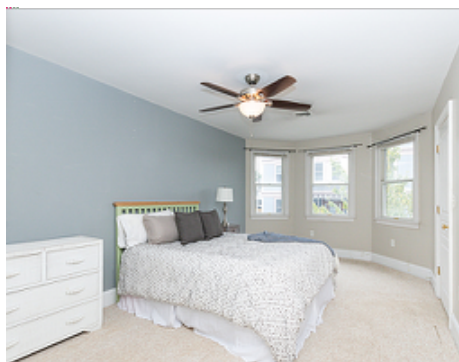
Bathroom



Bedroom



Bedroom



Bedroom



Bedroom



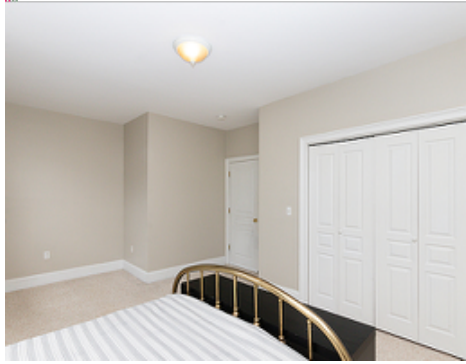
Bathroom



Master Bathroom



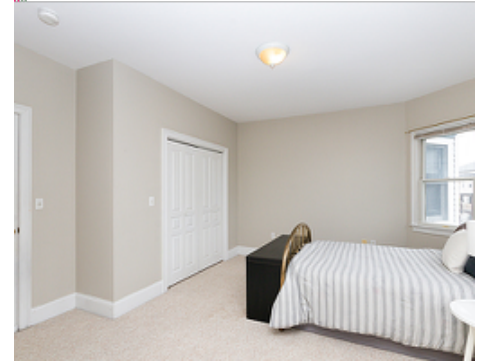
Laundry



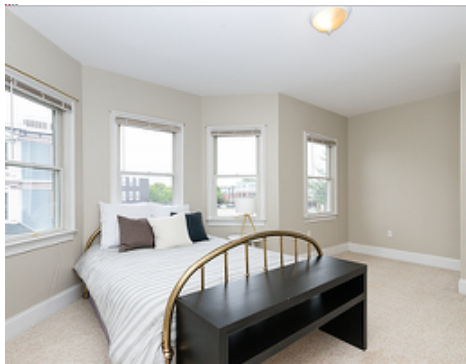
Bedroom



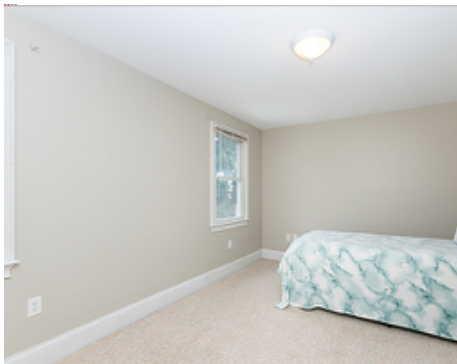
Bedroom



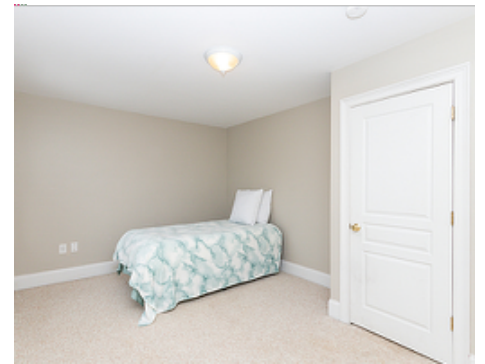
Bedroom



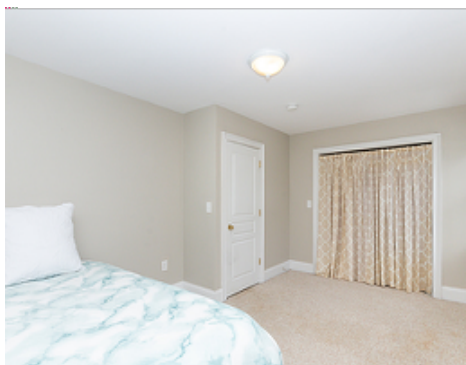
Bedroom



Bedroom



Bedroom



Bedroom



Bedroom



Bathroom