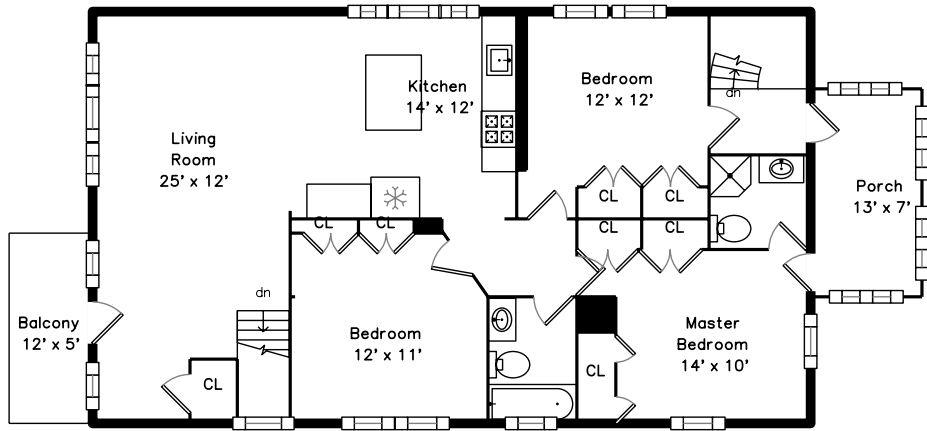
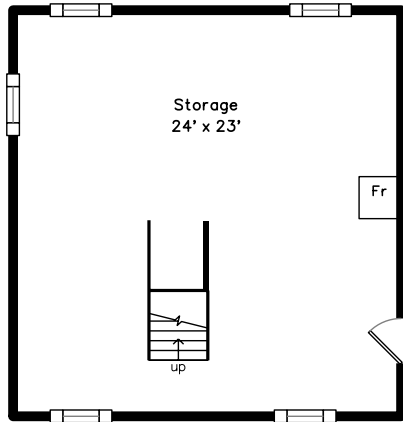


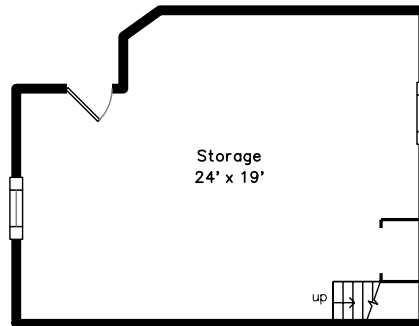
# Upper



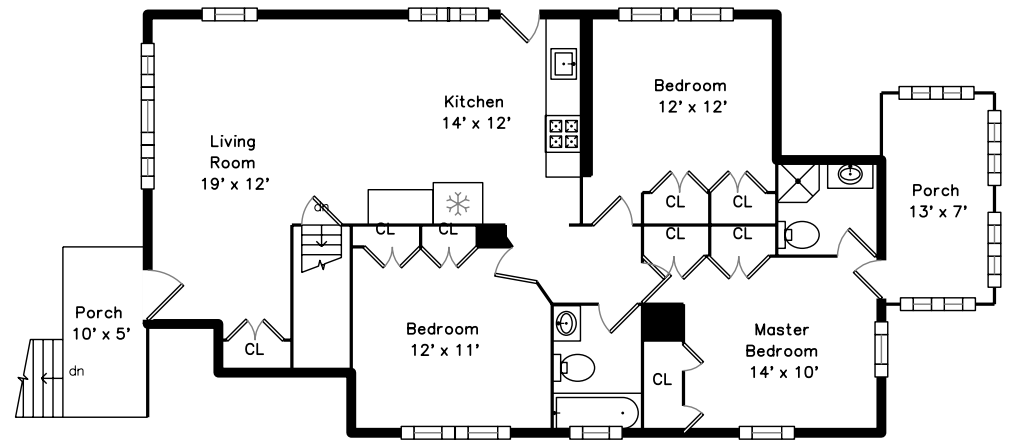
# Lower



# Basement



# Main

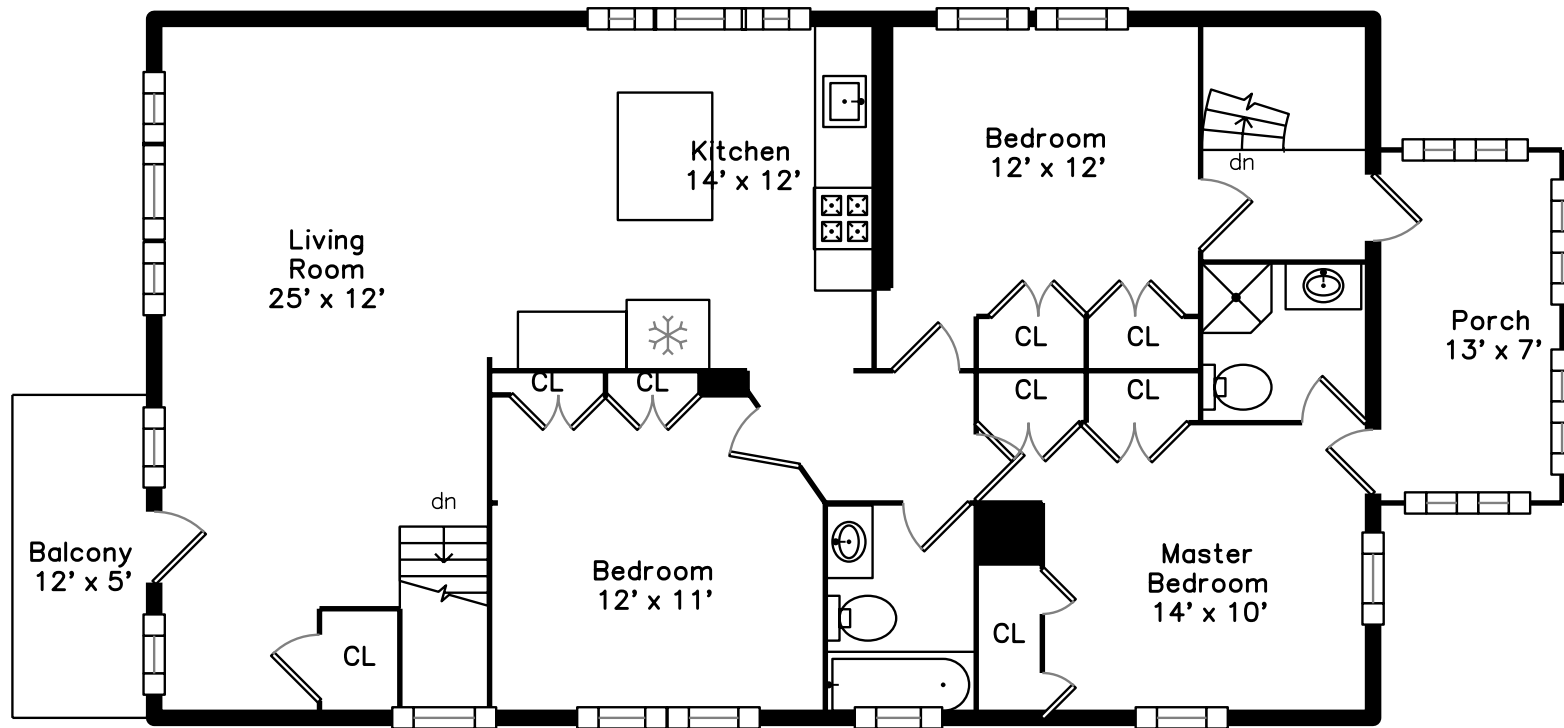


574 Lagrange St 1  
Boston, MA 02132

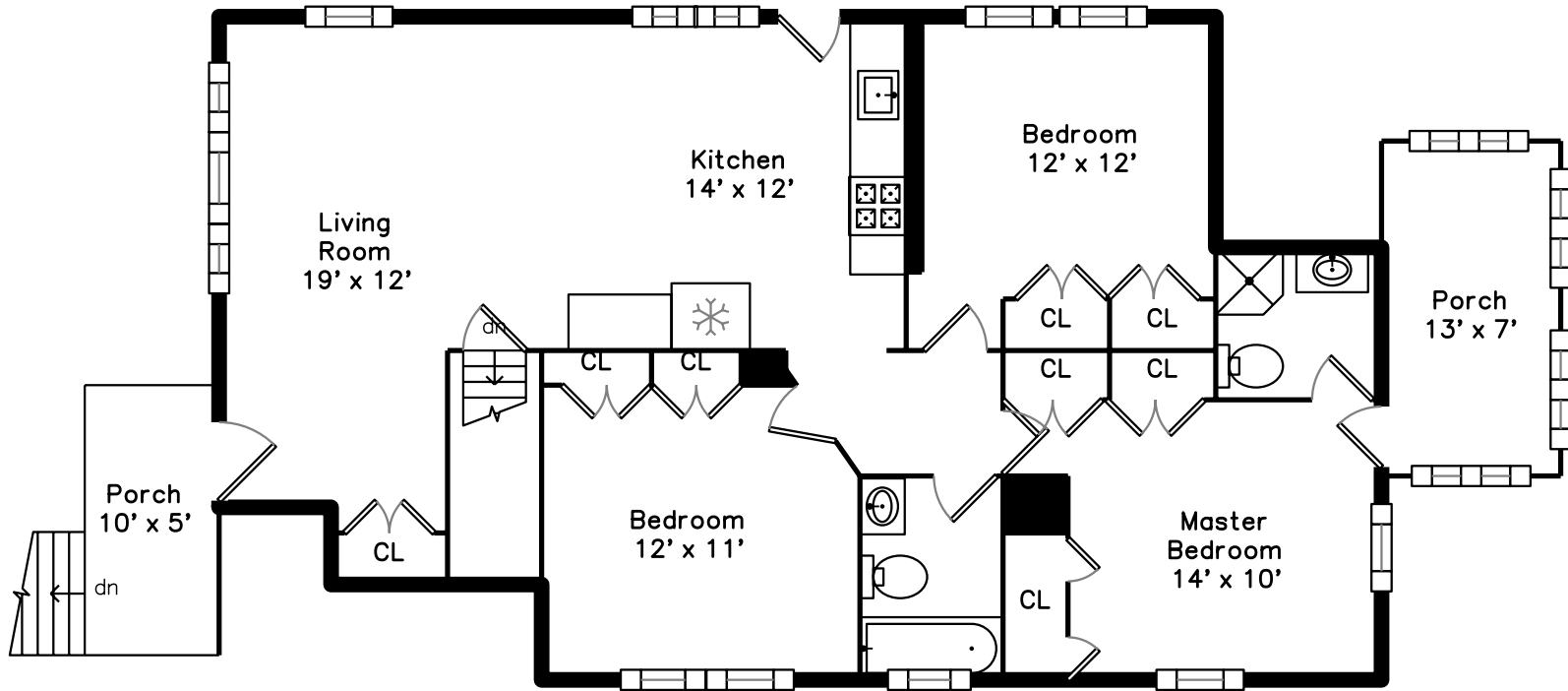
PicturePlan by vis-home

Measurements may not be 100% accurate.  
Floor plans are provided for convenience only.  
Room sizes are not used to calculate area.

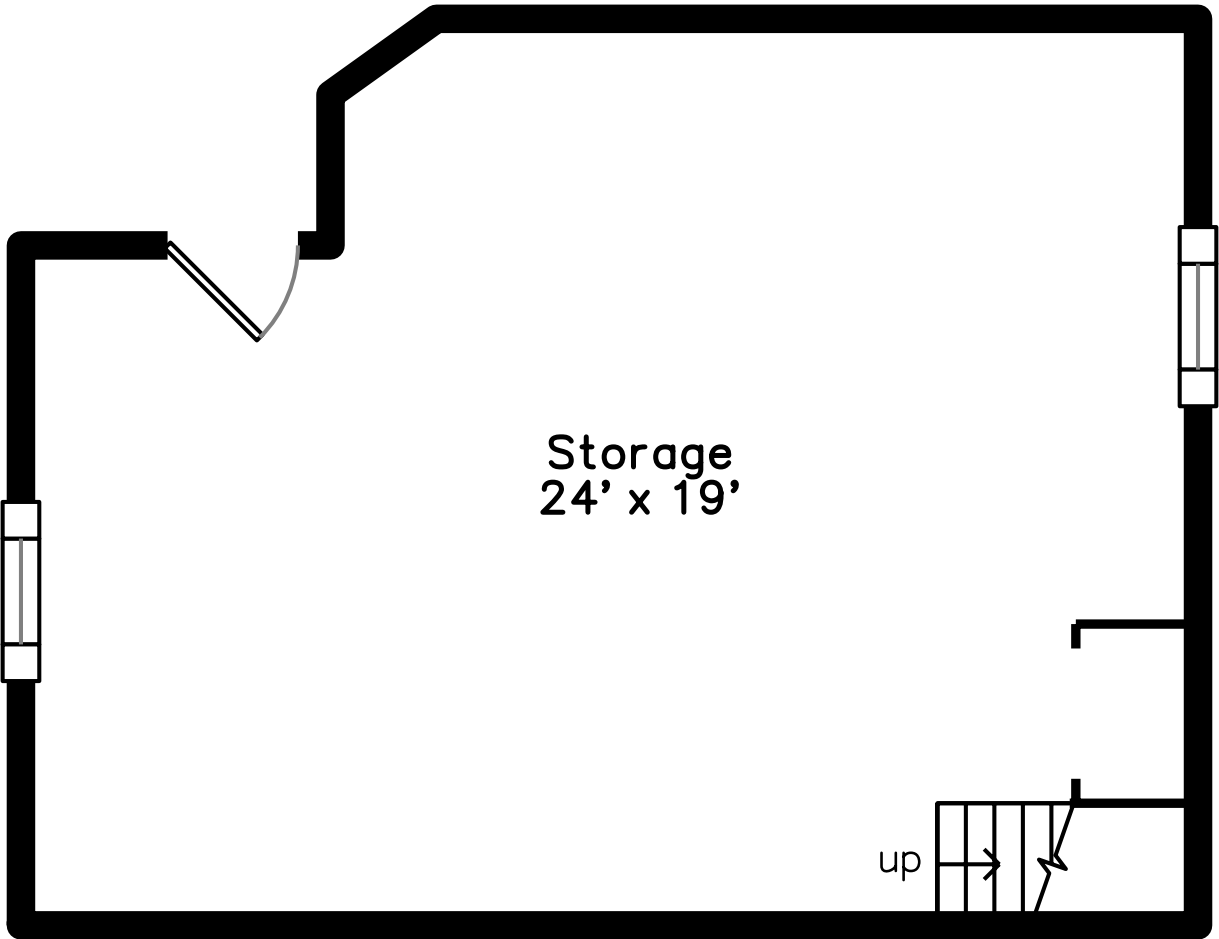
# Upper



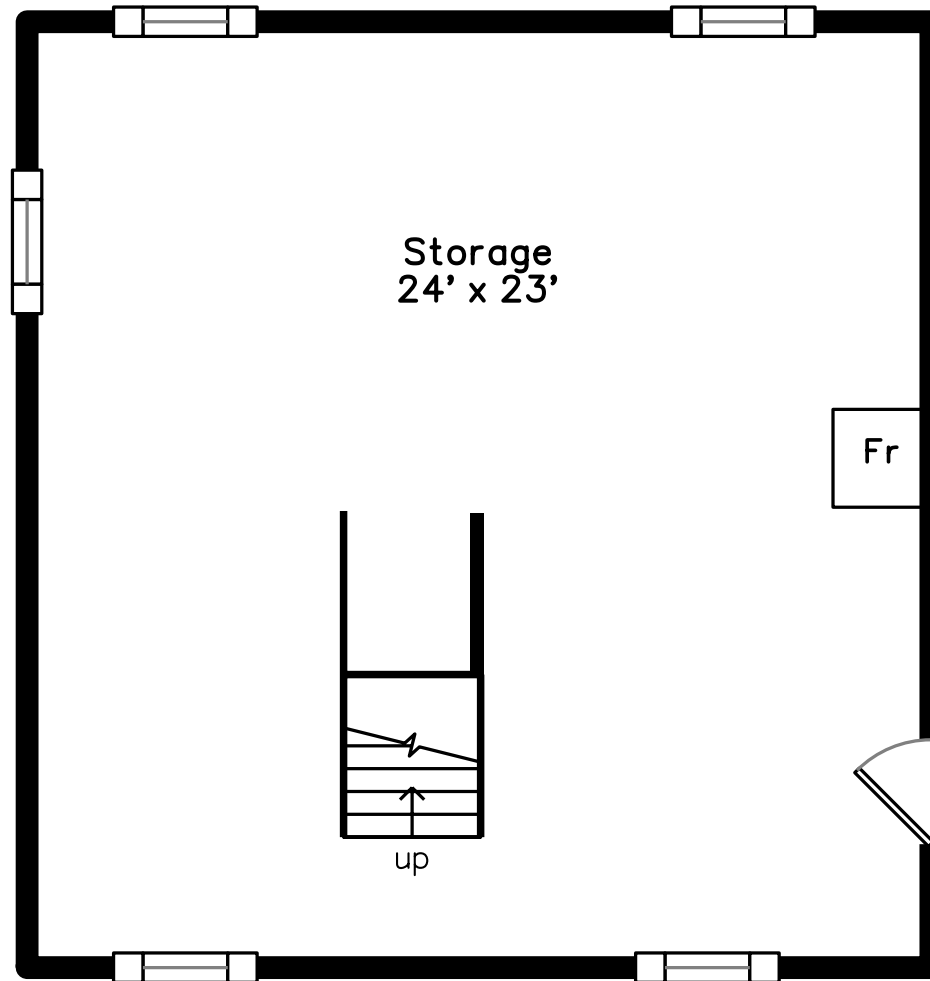
# Main



# Basement



# Lower





Outside



Outside



Backyard



Backyard



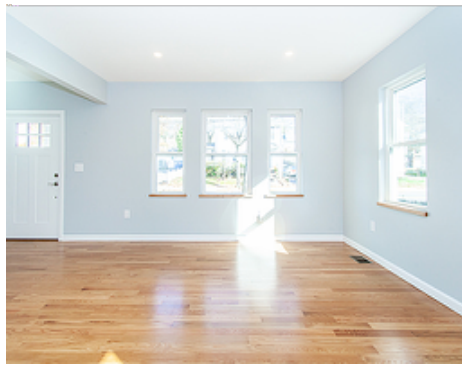
Backyard



Outside



Porch



Living Room



Living Room



Kitchen



Kitchen



Kitchen



Kitchen



Main Bedroom



Main Bedroom





Main Bathroom



Bedroom



Bedroom



Bedroom



Bedroom



Porch



Bathroom



Living Room



Living Room



Living Room



Kitchen



Kitchen



Kitchen



Kitchen



Main Bedroom





Main Bedroom



Main Bathroom



Bedroom



Bedroom



Bedroom



Porch



Porch



Bathroom



Balcony



Storage



Storage



Storage



Storage



Storage



Storage