

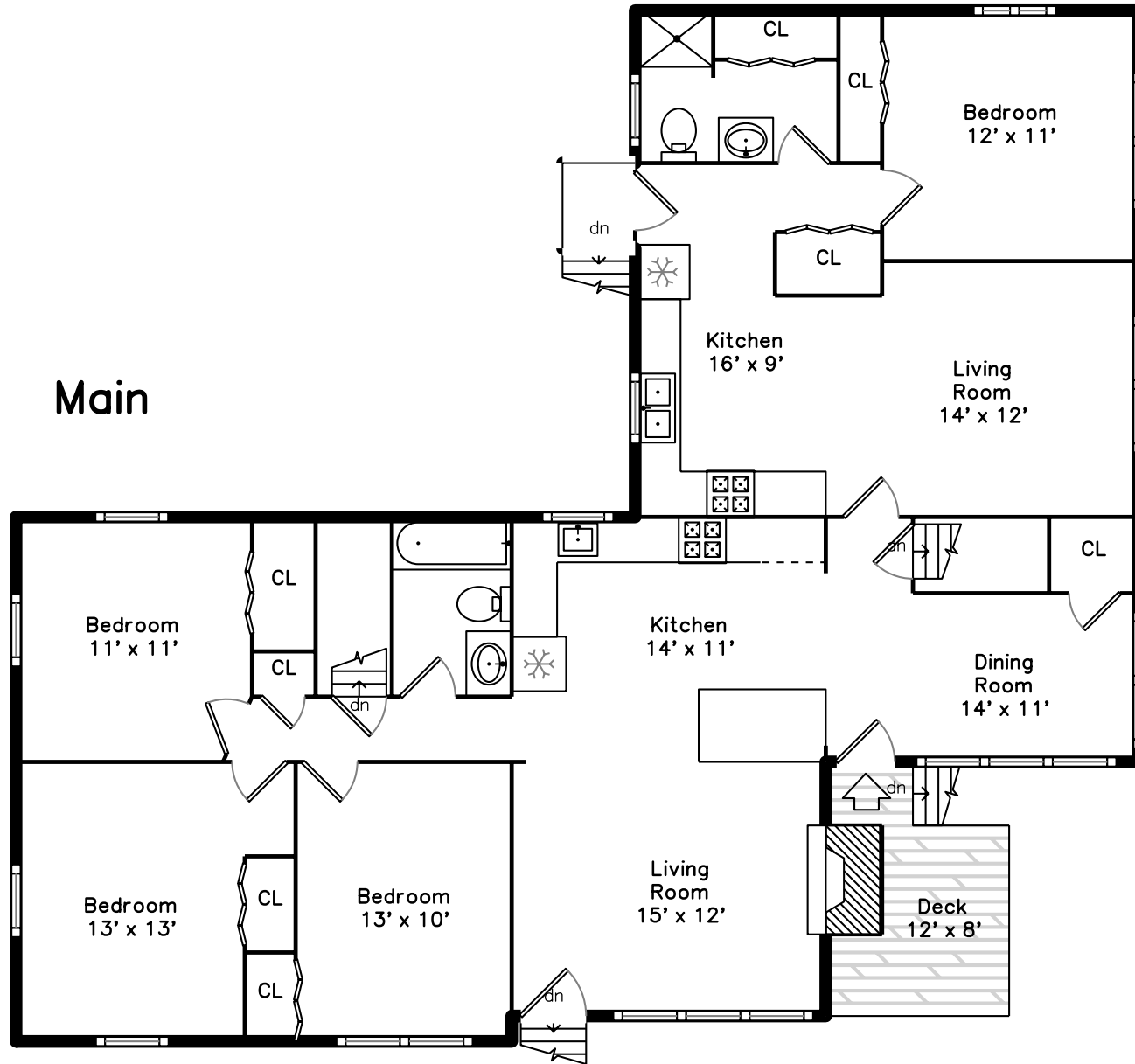
The floor plan shows a large Recreation Room (35' x 15') and a smaller Utility room (22' x 9'). A staircase labeled 'up' is located near the top left. A closet labeled 'CL' is situated on the left side of the Recreation Room. The plan also includes a small entrance area with a door and a window.

Main

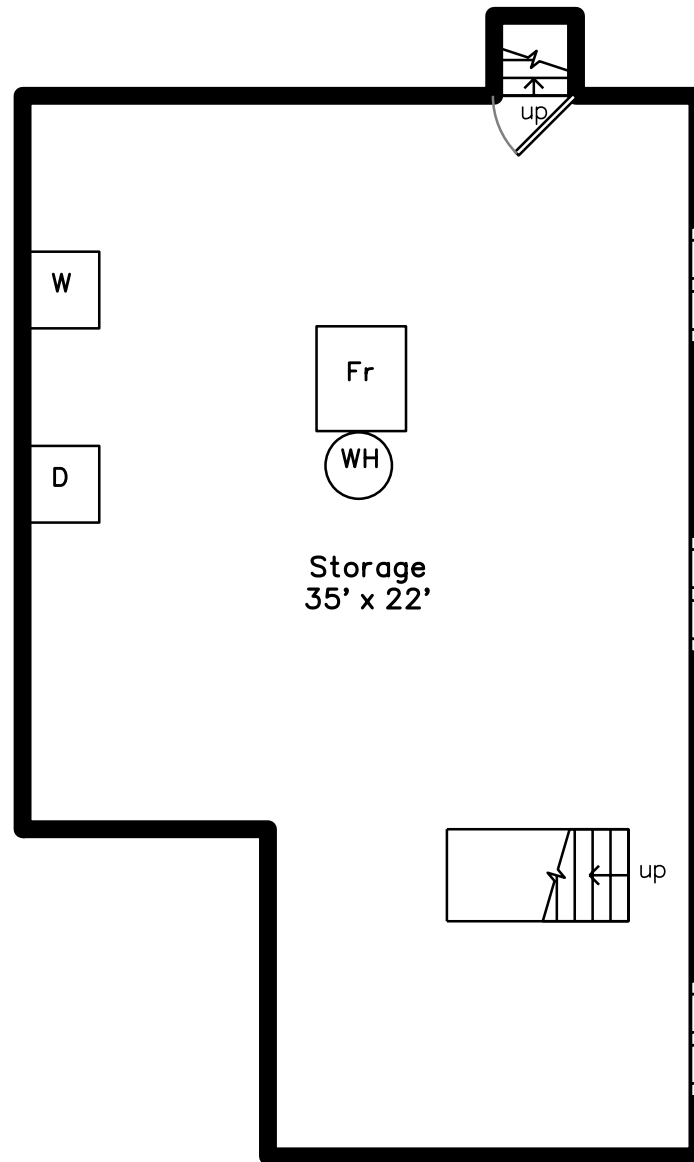
The floor plan shows a duplex with two units. The top unit includes a Bedroom (12' x 11'), Kitchen (16' x 9'), Living Room (14' x 12'), and a Bathroom. The bottom unit includes a Bedroom (11' x 11'), Kitchen (14' x 11'), Living Room (15' x 12'), and a Bathroom. A central staircase with a 'dn' (down) arrow is located between the units. A Deck (12' x 8') is attached to the bottom unit's living room. Various closets (CL) and storage areas are also indicated.

Measurements may not be 100% accurate.
Floor plans are provided for convenience only.
Room sizes are not used to calculate area.

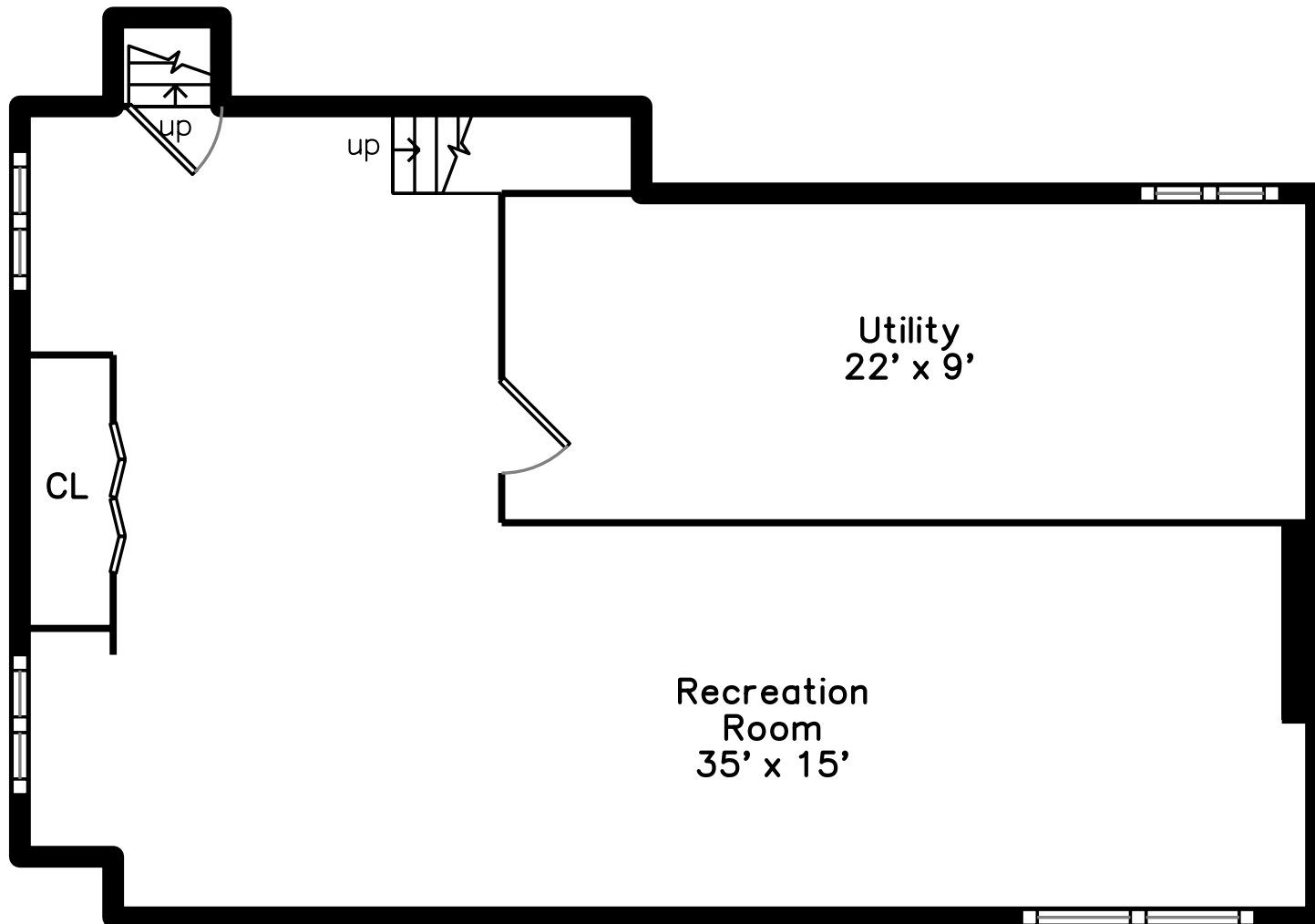
Main



Lower



Basement





Outside



Outside



Outside



Outside



Outside



Outside



Living Room



Living Room



Living Room



Kitchen



Kitchen



Dining Room



Living Room



Living Room



Kitchen



Bedroom



Bedroom



Bedroom



Bedroom



Bathroom



Bathroom



Storage



Storage



Recreation Room



Recreation Room



Recreation Room