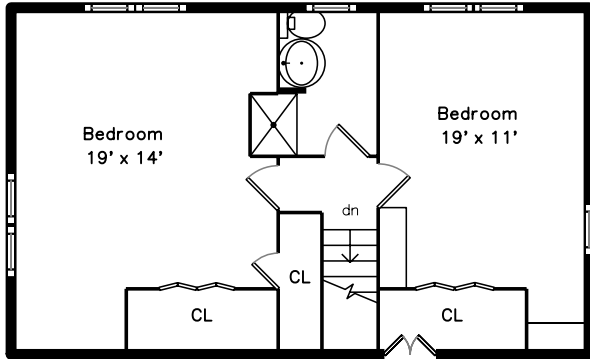
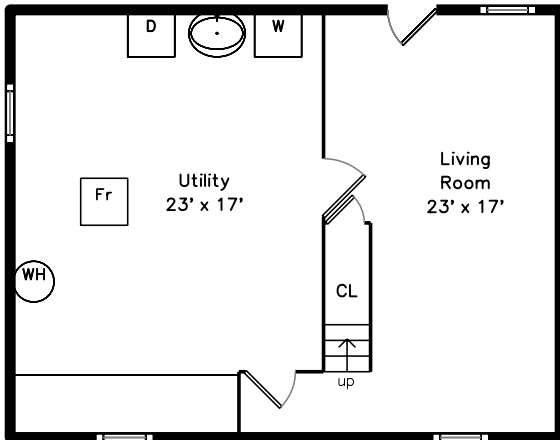


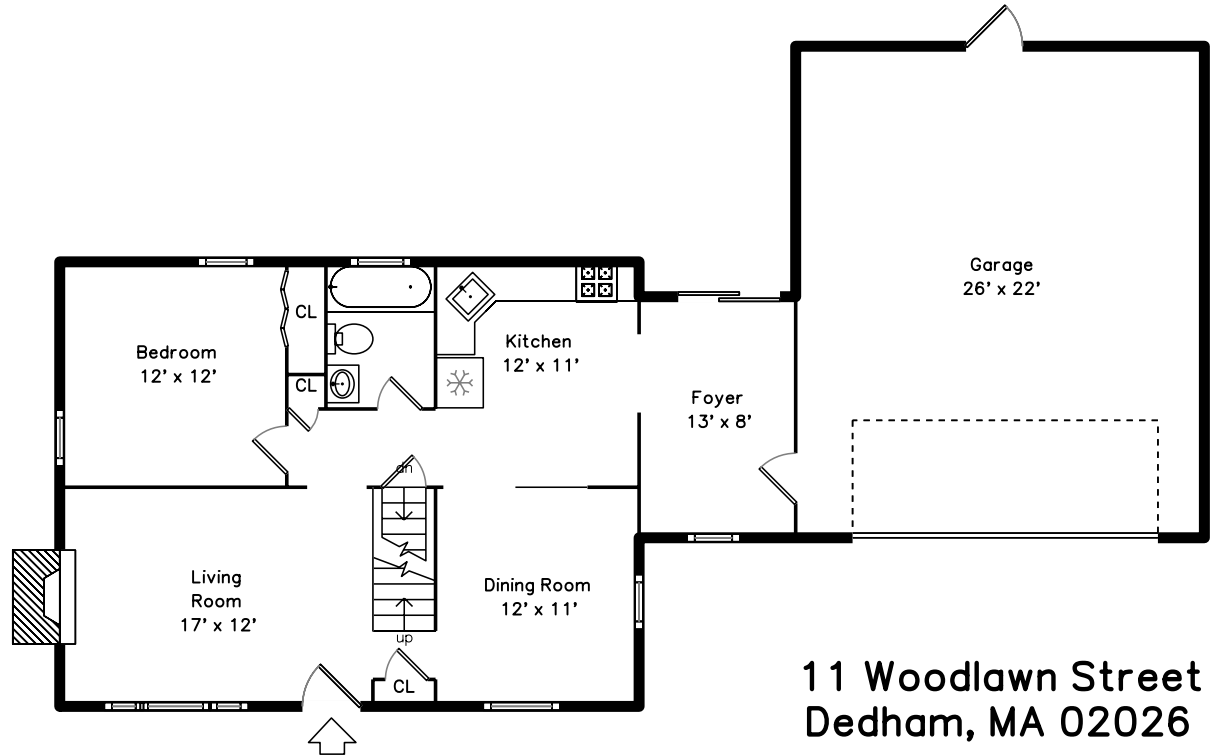
Upper




Lower



Main

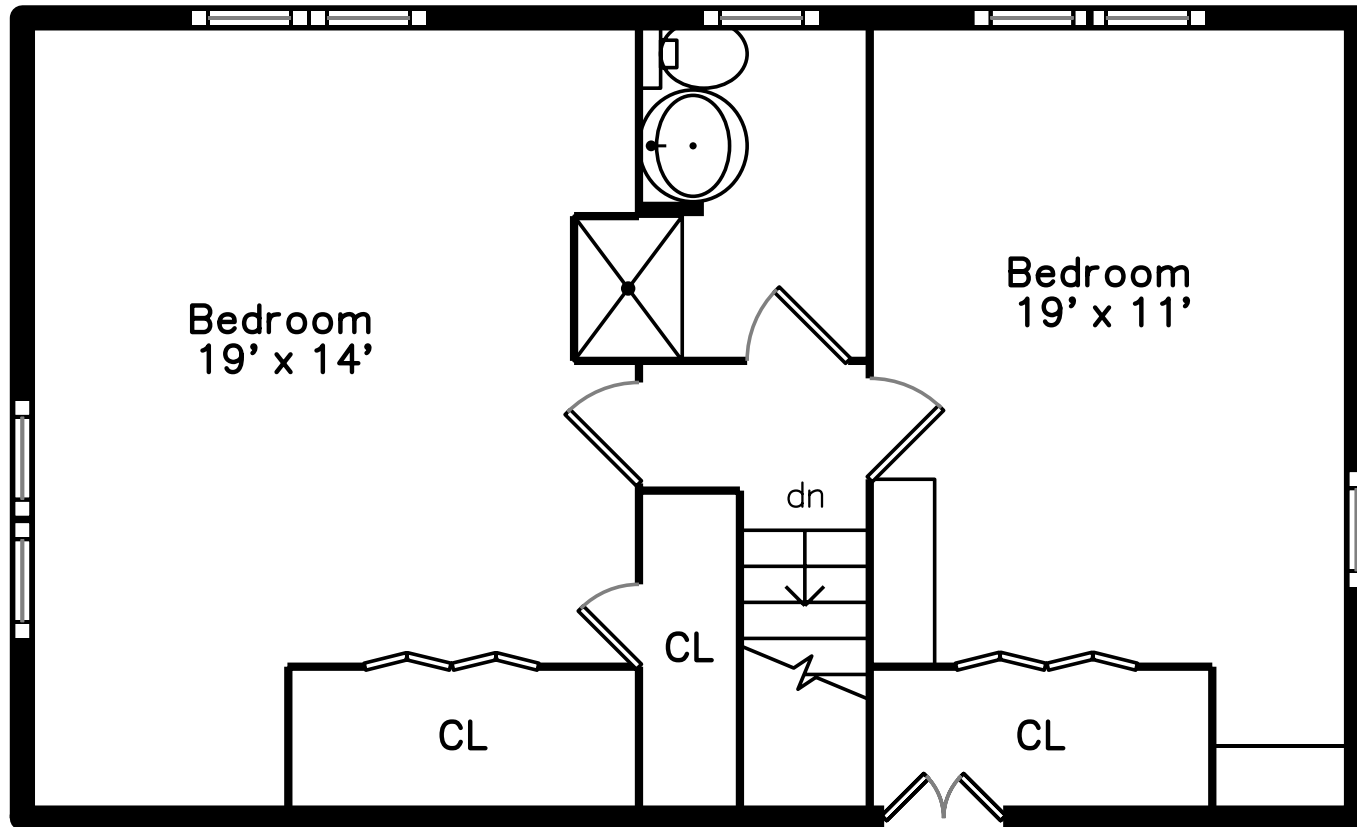


11 Woodlawn Street
Dedham, MA 02026

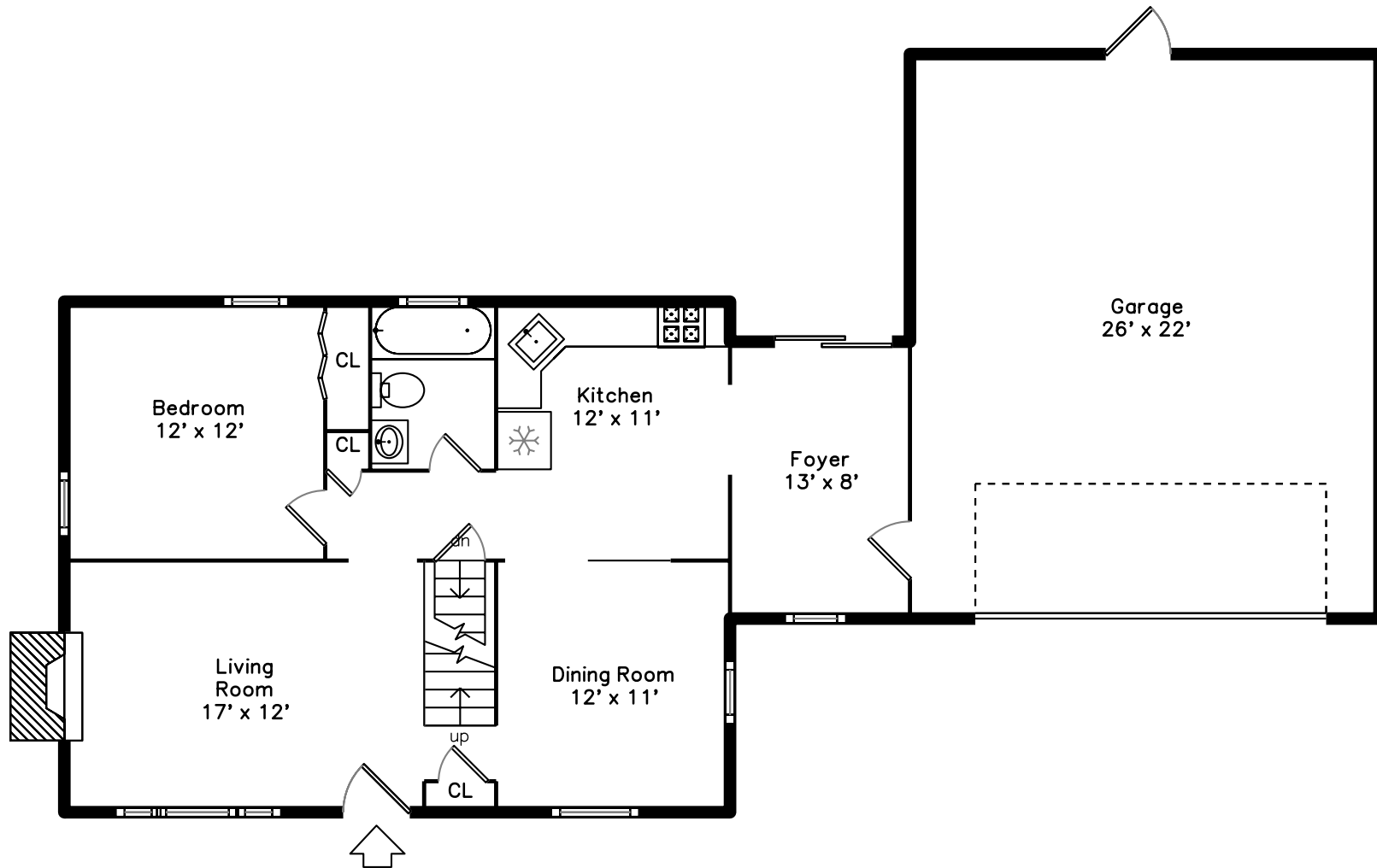
PicturePlan by  vis-home

Measurements may not be 100% accurate.
Floor plans are provided for convenience only.
Room sizes are not used to calculate area.

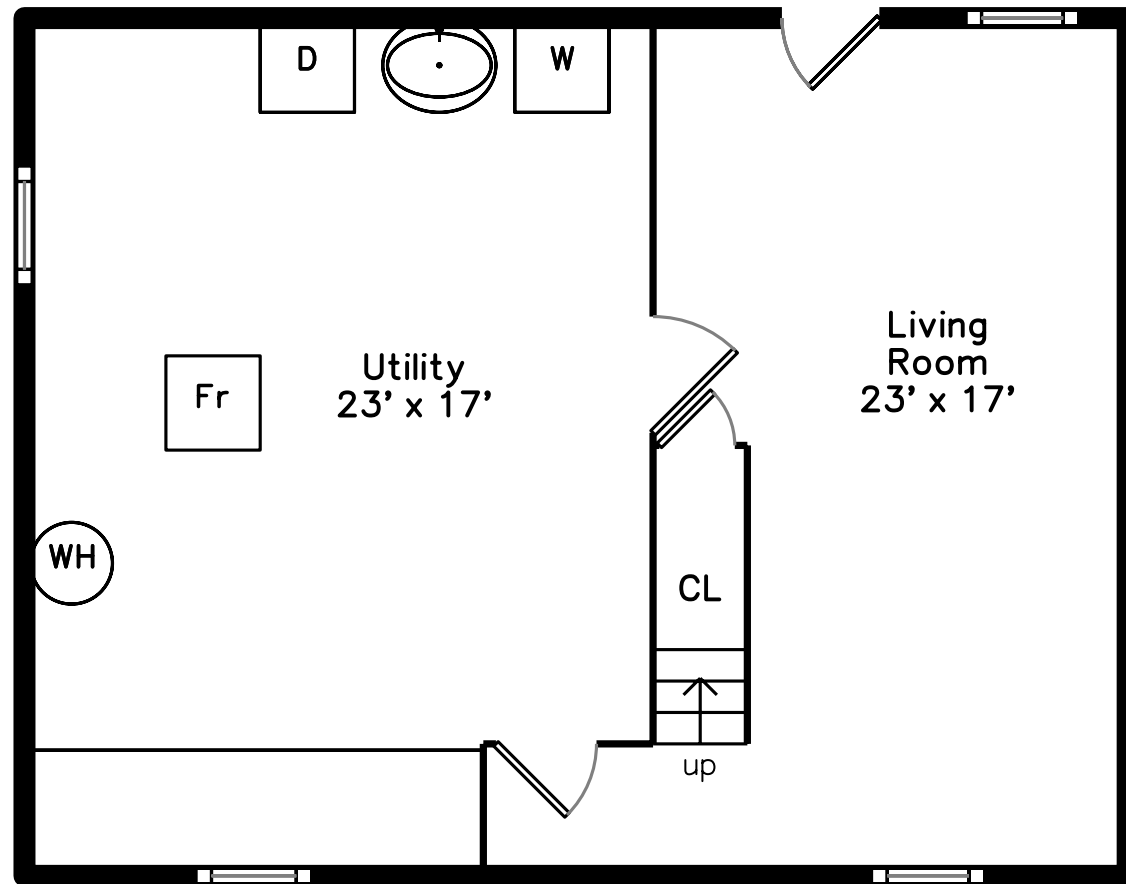
Upper



Main



Lower





Outside



Outside



Outside



Outside



Outside



Living Room



Living Room



Living Room



Living Room



Dining Room



Dining Room



Dining Room



Kitchen



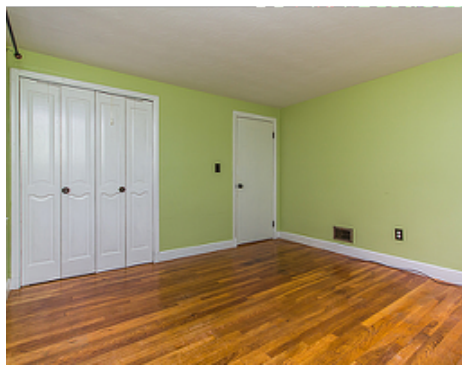
Kitchen



Kitchen



Bedroom



Bedroom



Bedroom



Foyer



Foyer



Bathroom



Bathroom



Bedroom



Bedroom



Bedroom



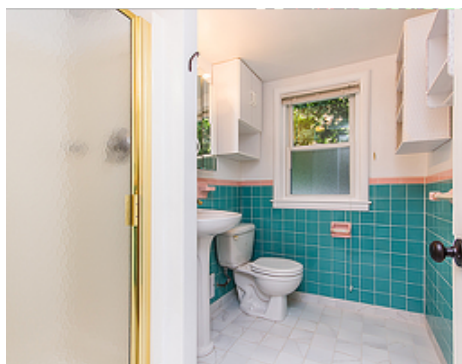
Bedroom



Bedroom



Bedroom



Bathroom



Bathroom



Living Room



Living Room



Utility



Utility