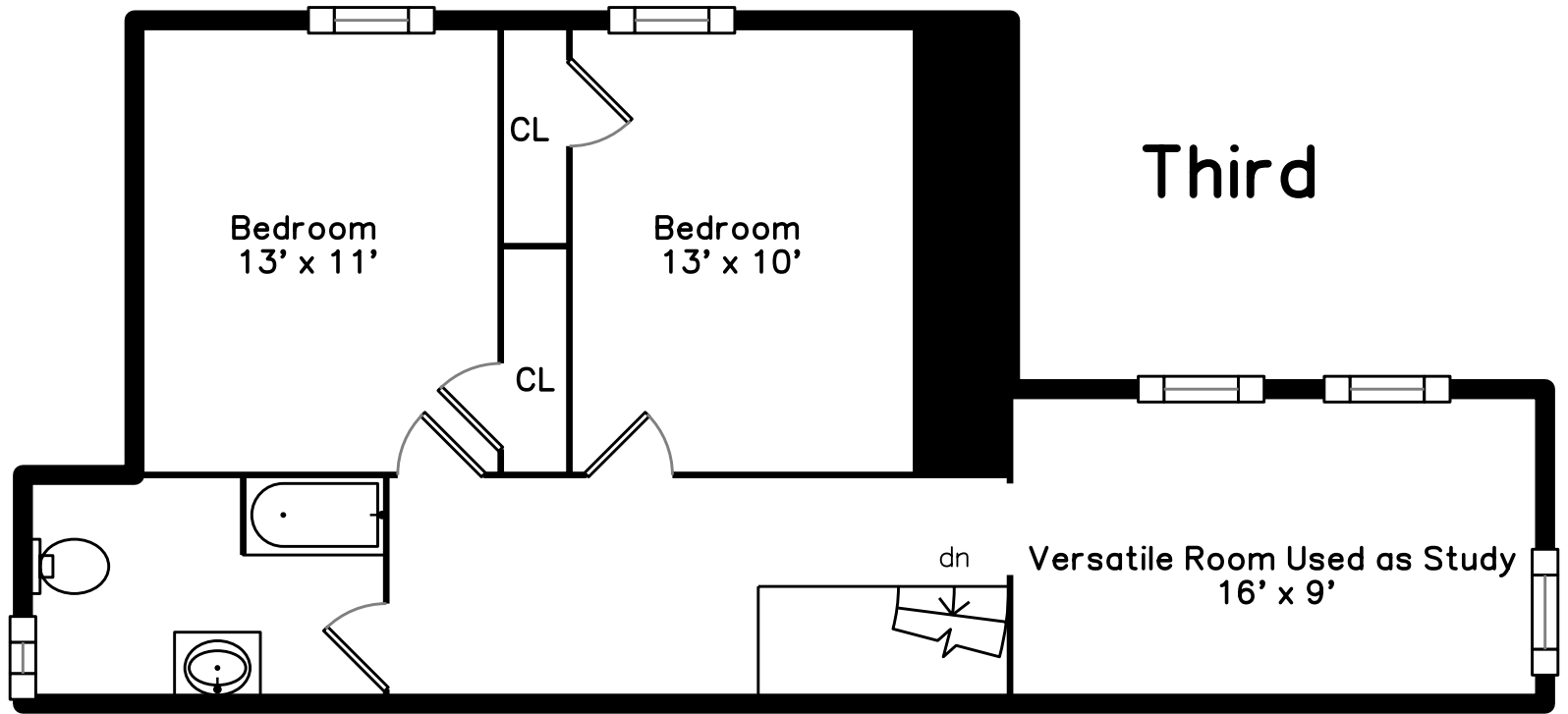


**48 Haskell Street
Cambridge, MA 02140**

PicturePlan by  vis-home

Measurements may not be 100% accurate.
Floor plans are provided for convenience only.
Room sizes are not used to calculate area.



Third

Bedroom
13' x 11'

Bedroom
13' x 10'

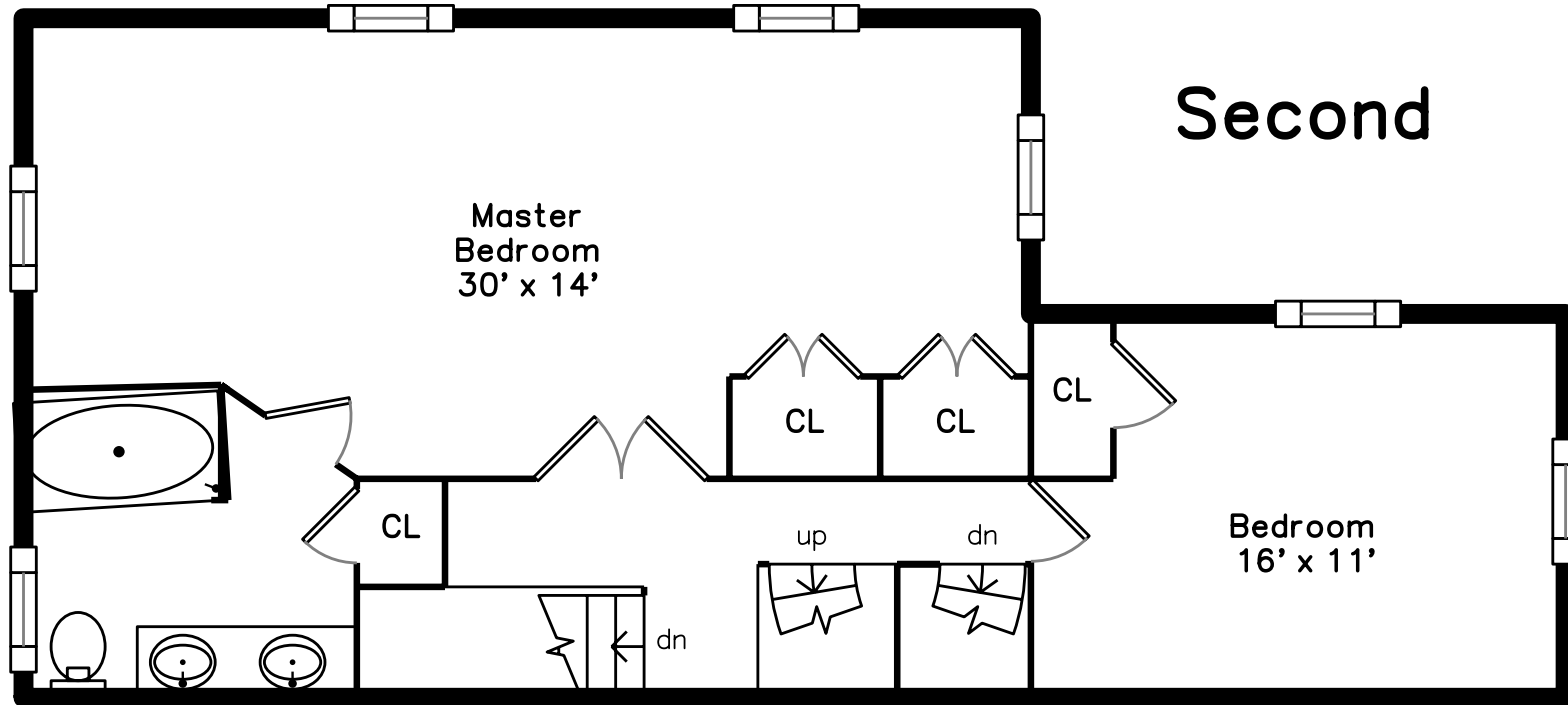
CL

CL

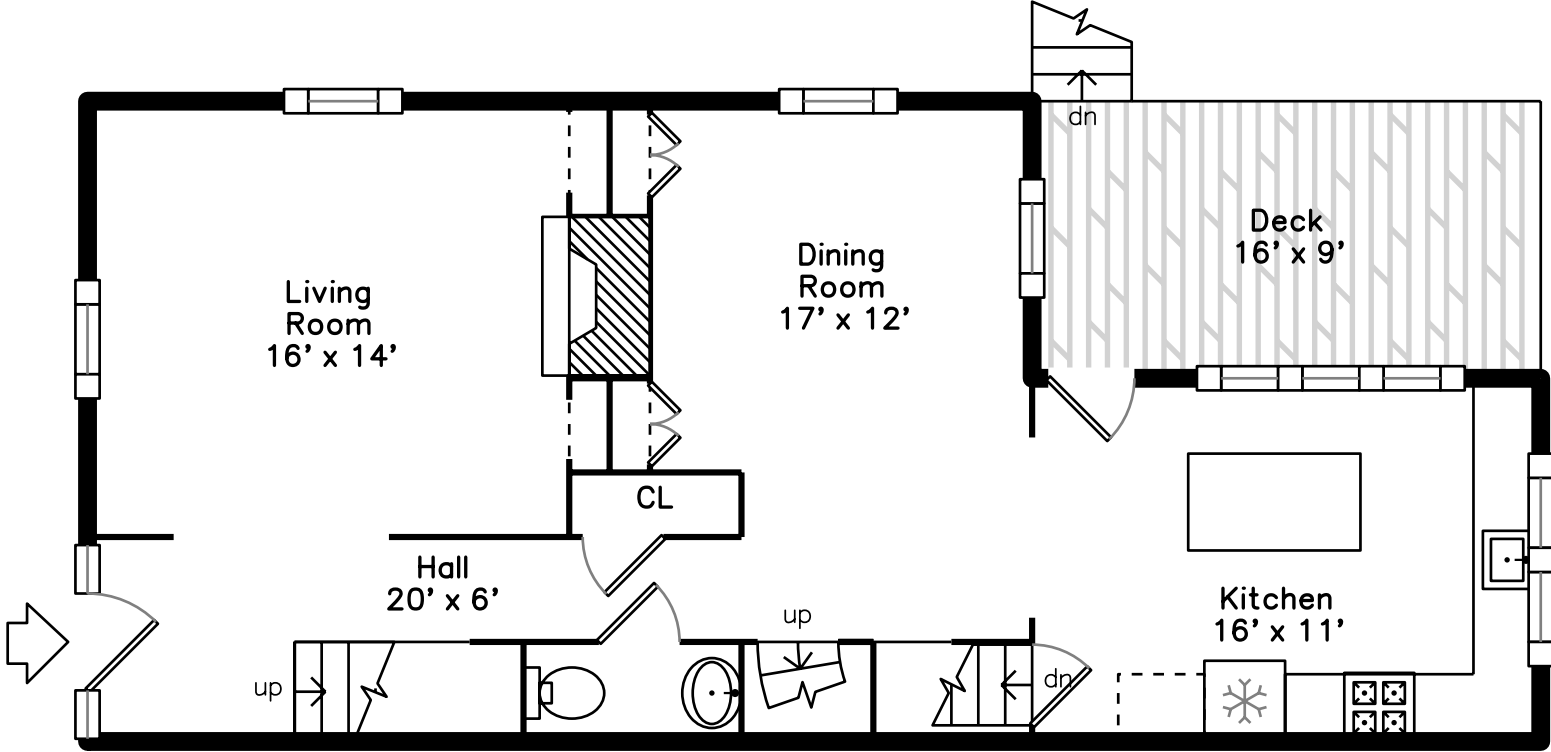
dn

Versatile Room Used as Study
16' x 9'

Second



First





48-50 are 2 Single Families



48 Haskell Walkway



Terraced Garden



Long Paved Driveway



Walk Out Basement



Park-Like Back Yard



Decorative Stained Glass



Foyer



Gas Fireplace



Cherry Mantel & Shelves



Over-sized Windows



Cherry Cabinetry



Picture Window to Deck



Premium Granite Counters



Island Added in 2010



Powder Room



Deck



Jack & Jill Staircases



Bedroom Used as Office



Two Rooms Combined in 2010



Hotel-Inspired Suite



BainUltra Soaker 72"x36"x20"



Caesarstone Quartz Counter



Wide Double Vanity



Skylit Landing



Hall



Skylights



Potential for Other Uses



Bedroom



Bedroom



Remodeled in 2010