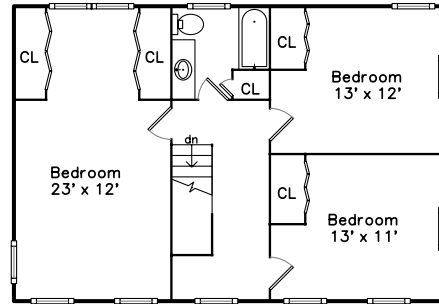
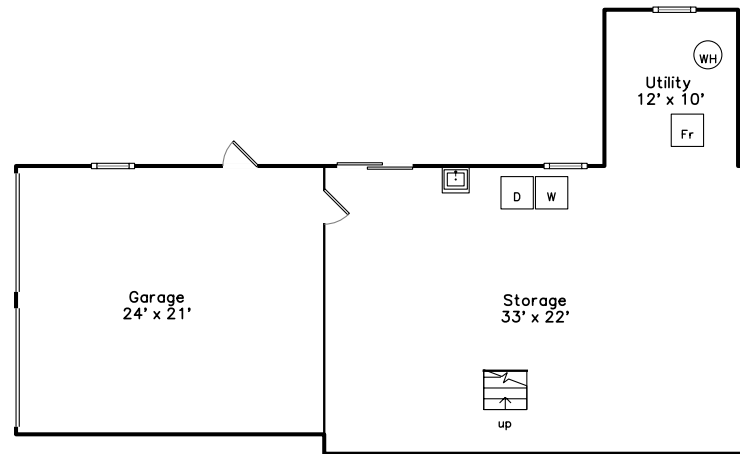


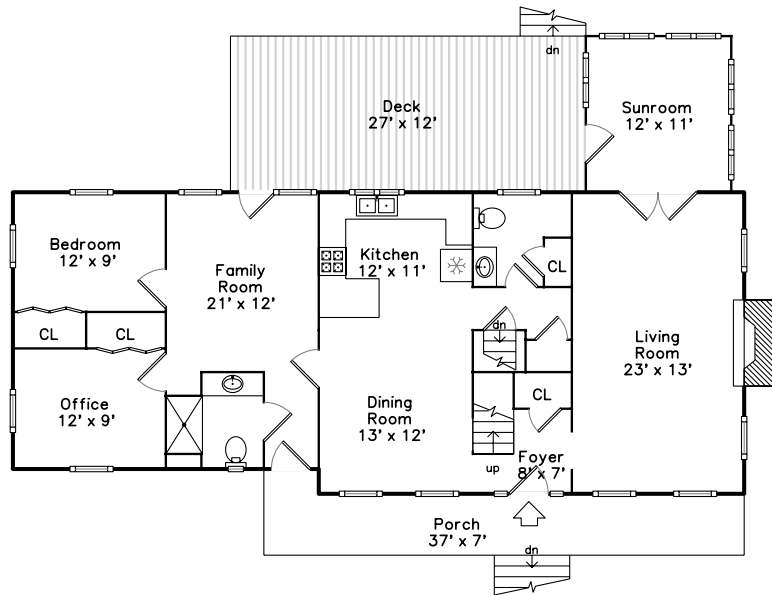
Upper



Basement



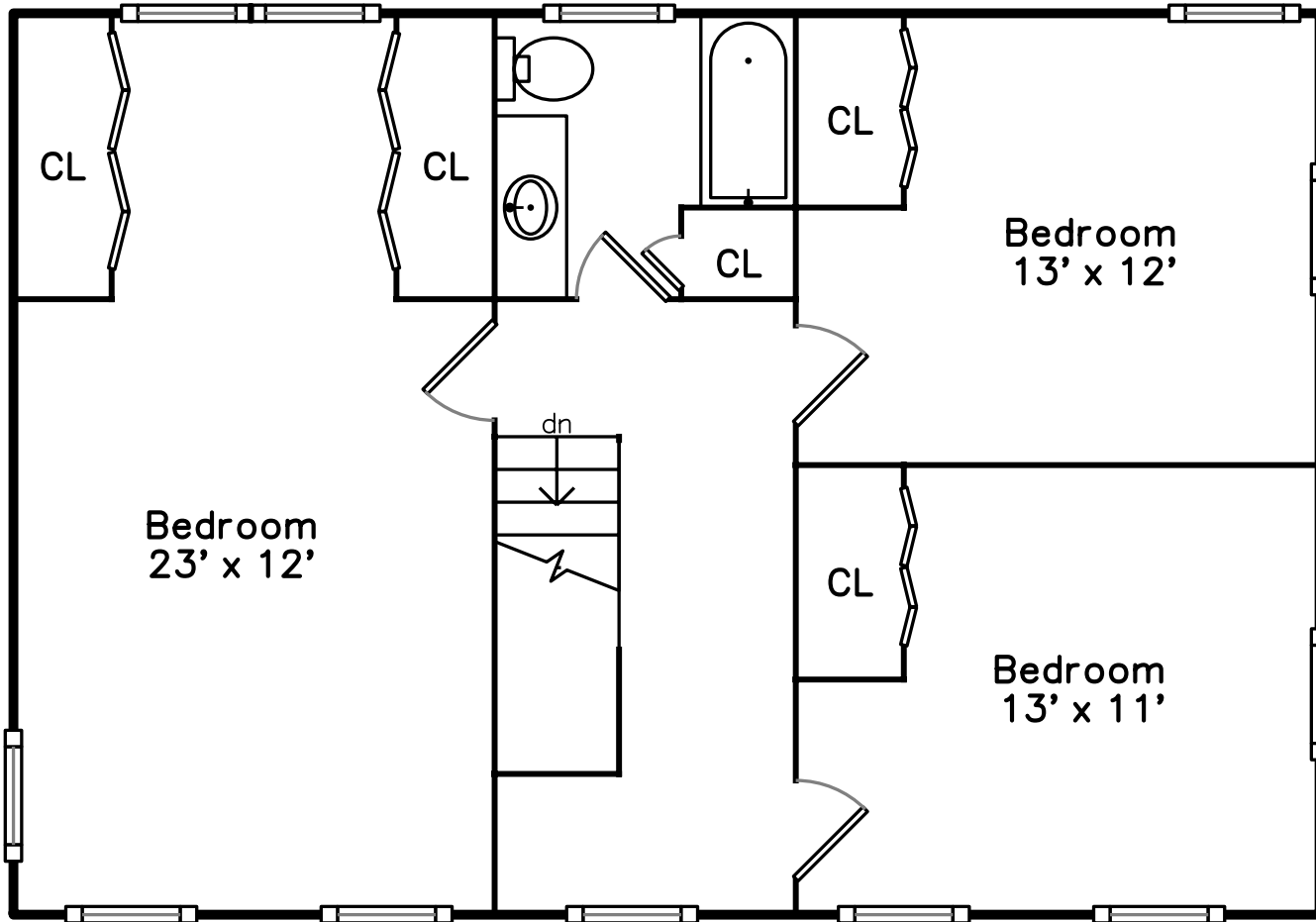
Main



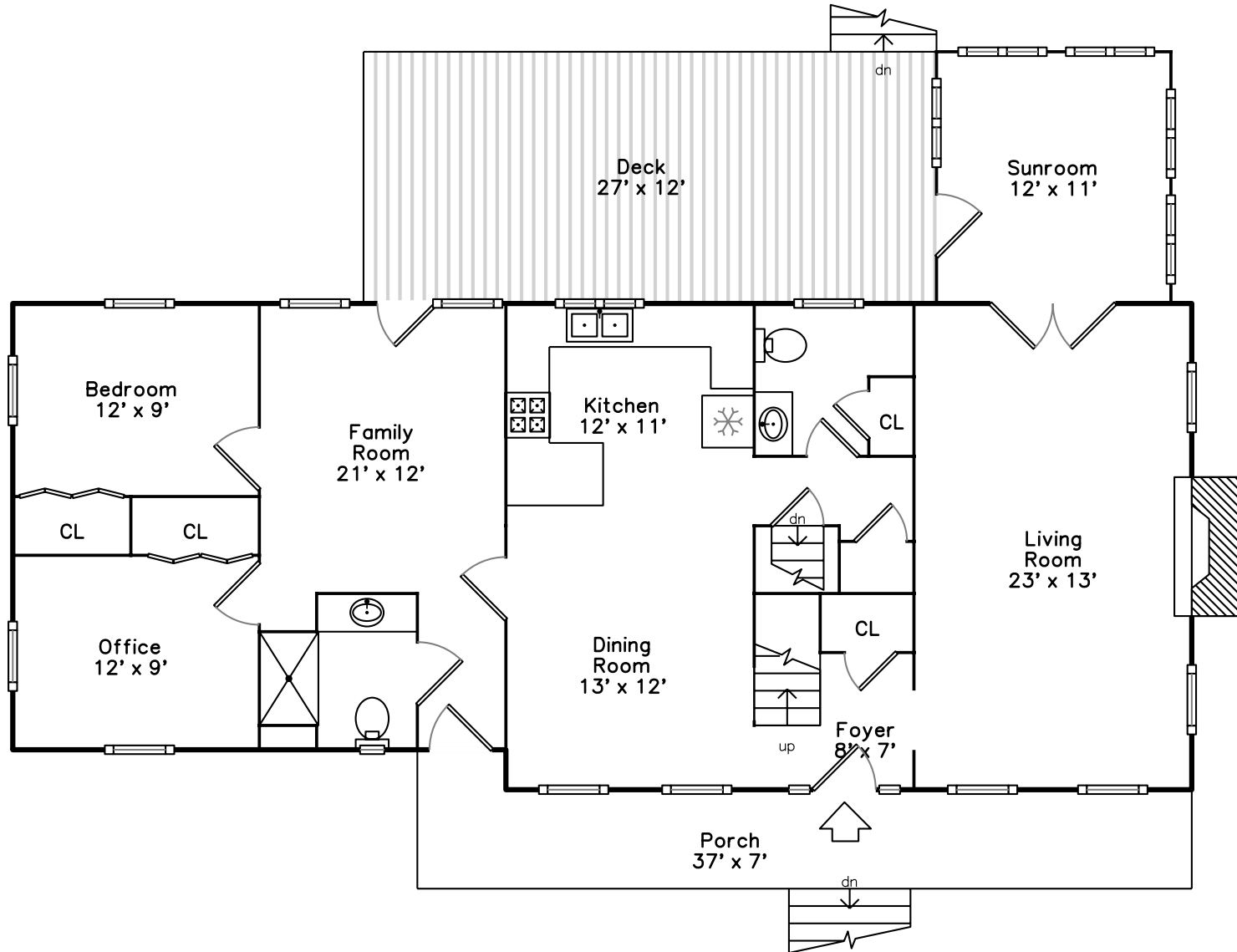
192 Westford Road
Tyngsborough, MA 01879

PicturePlan(tm) by Vis-Home(C) 2016
Measurements may not be 100% accurate.
Floor plans are provided for convenience only.
Room sizes are not used to calculate area.

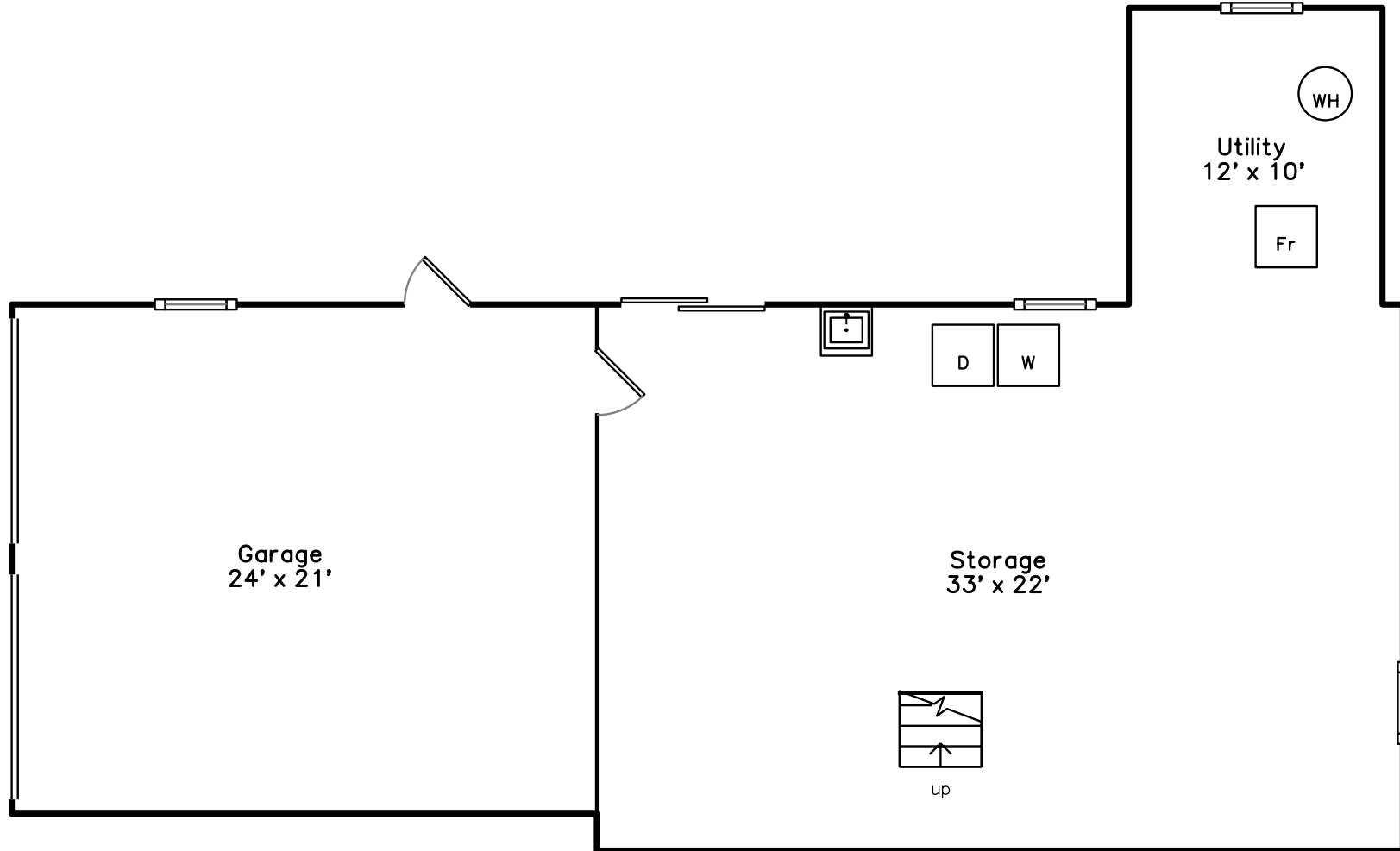
Upper



Main



Basement





Outside



Outside



Outside



Outside



Outside



Outside



Outside



Outside



Outside



Outside



Living Room



Living Room



Dining Room



Dining Room



Kitchen



Kitchen



Kitchen



Kitchen



Family Room



Family Room



Bedroom



Bedroom



Office



Office



Sunroom



Sunroom



Bathroom



Bathroom



Bathroom



Deck



Deck



Landing



Bedroom



Bedroom



Bedroom



Bedroom



Bedroom



Bedroom



Bedroom



Bathroom