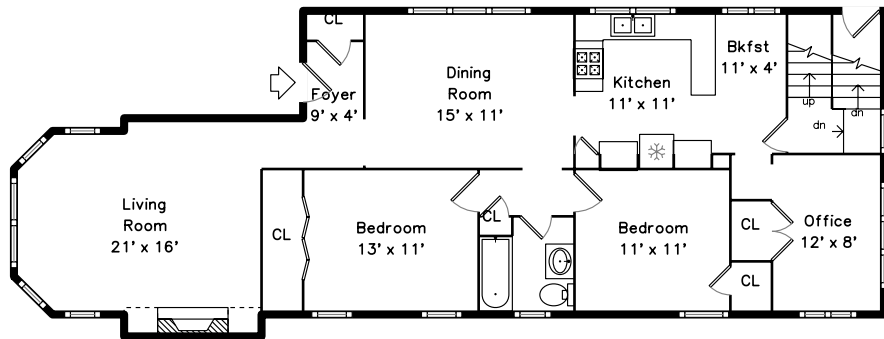
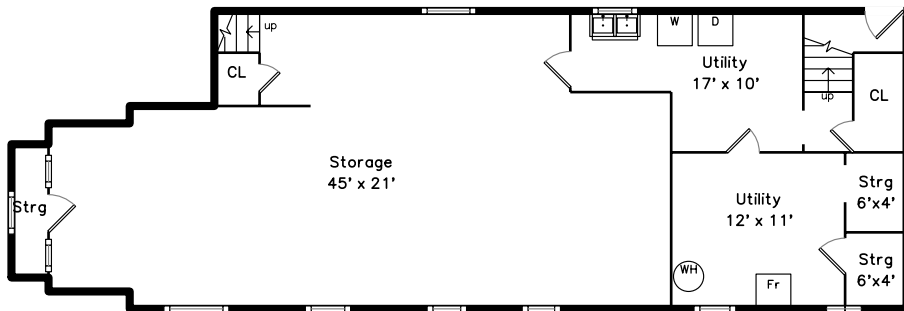


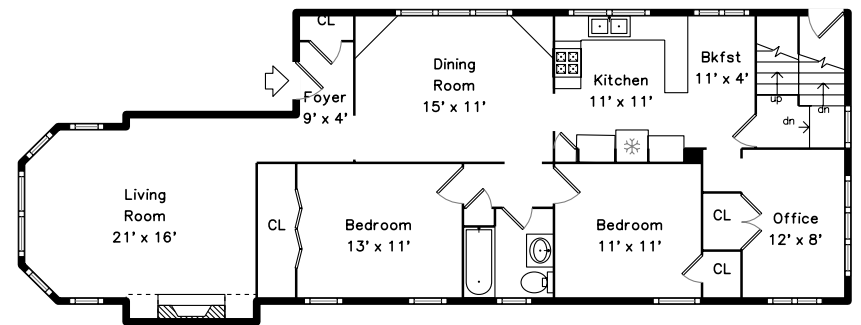
Upper




Basement



Main



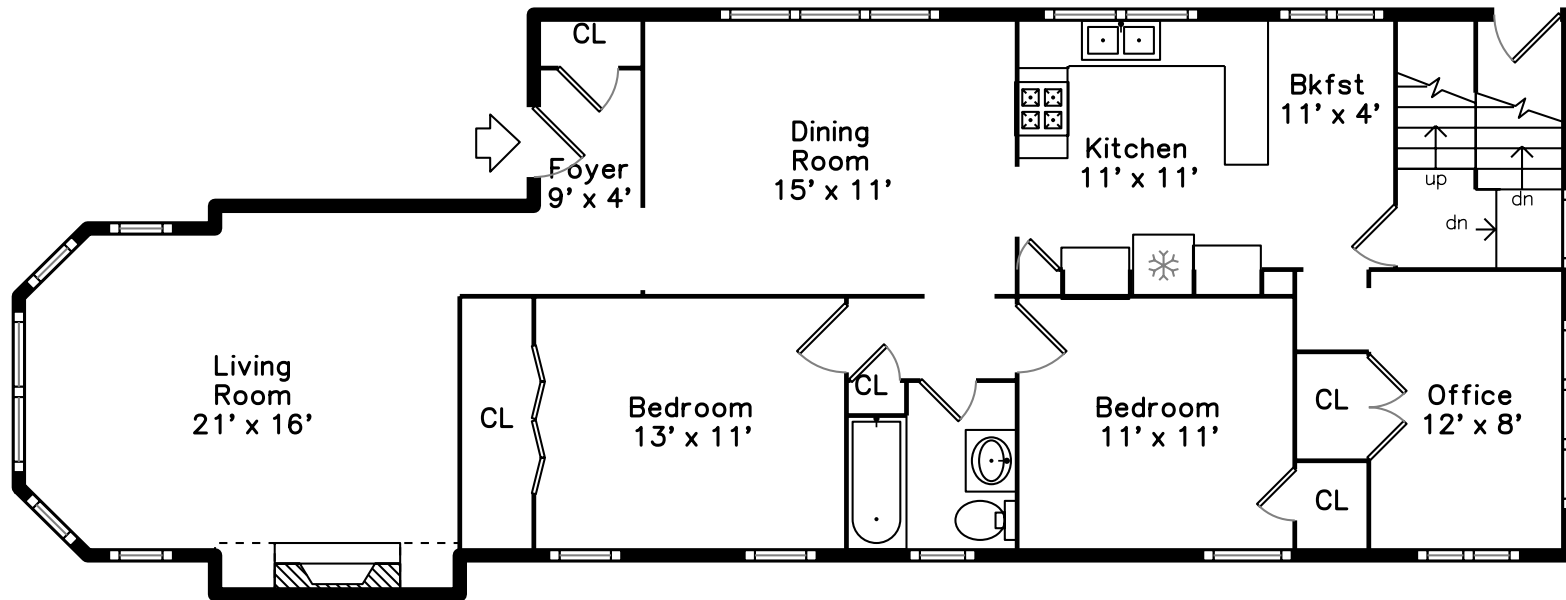
5942 N. St. Louis Avenue
Chicago, IL 60659

PicturePlan by  vis-home

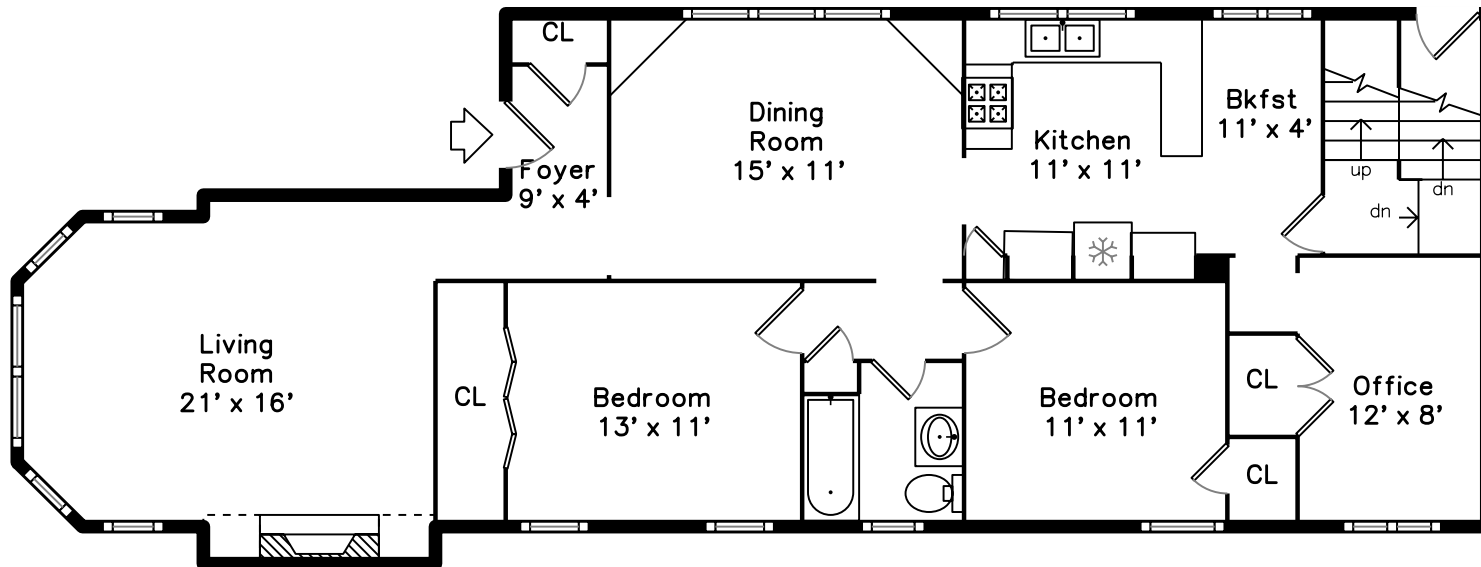
Measurements may not be 100% accurate.
Floor plans are provided for convenience only.
Room sizes are not used to calculate area.



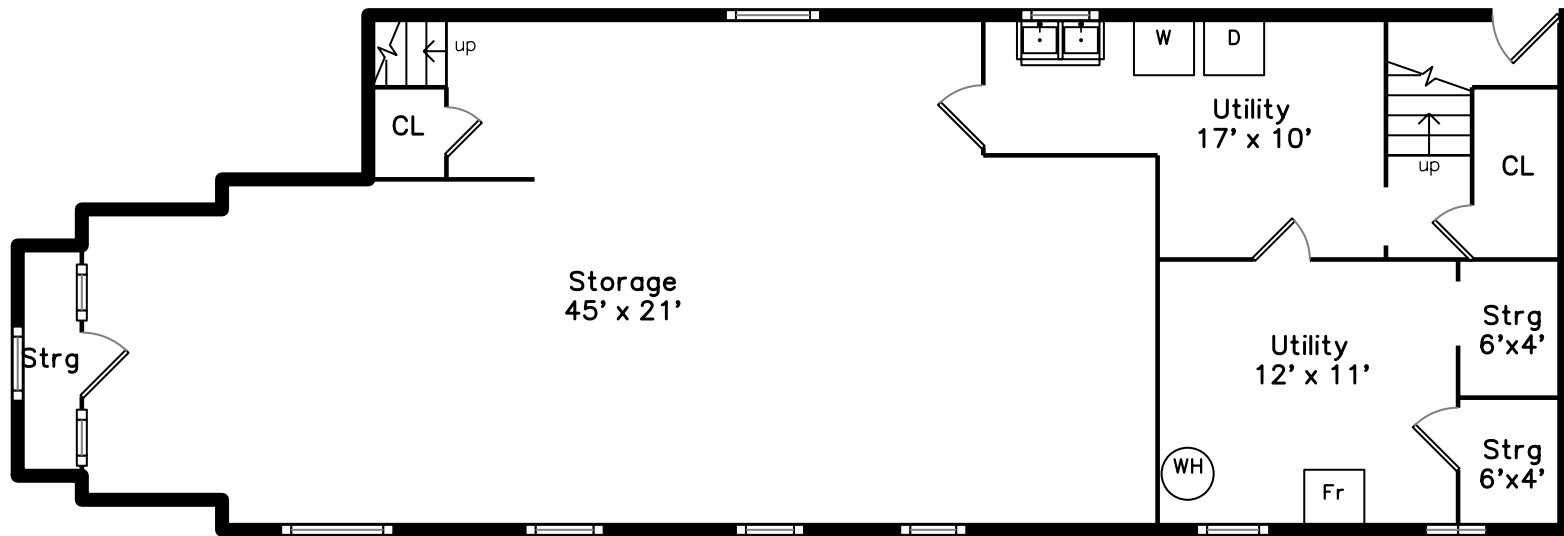
Upper



Main



Basement





Outside



Outside



Outside



Backyard



Backyard



Garage



Foyer



Living Room



Living Room



Dining Room



Dining Room



Breakfast



Kitchen



Kitchen



Breakfast



Kitchen



Kitchen



Bedroom



Bedroom



Bedroom



Bedroom



Office



Office



Bathroom



Foyer



Living Room



Living Room



Living Room



Dining Room



Dining Room



Breakfast



Kitchen



Kitchen



Kitchen



Kitchen



Bedroom



Bedroom



Bedroom



Bedroom



Bathroom



Utility



Utility